



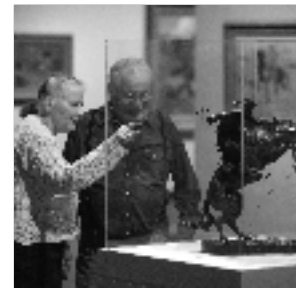
Joslyn Art Museum

2 0 0 6 A N N U A L R E P O R T



YEAR AT A GLANCE

- 224,423 visited Joslyn Art Museum.
- 32 works of art were acquired by Joslyn Art Museum through gift or purchase in the following areas: Modern and Contemporary (6); American (7); and European (19).
- 76 works of art were lent by Joslyn to other institutions.
- 64 works of art were lent by other institutions and individuals to Joslyn's permanent collection.
- 12 special exhibitions were on view at the Museum.
- 40,641 attended tours, lectures, gallery talks, special programs for adults, art classes, camps, and other programs at Joslyn.
- The Museum ended the year with 15,978 memberships.
- 51,438 attended music programs at Joslyn.
- 63,587 participated in Joslyn outreach programs.
- Volunteers logged 6,802 hours of service for the Museum's Art Reference Library, Museum Shop, Membership, Education (including the docent program), and Marketing & Public Relations departments (including music series).
- Joslyn's Abrahams Library acquired 951 new volumes. In 2006, there were 147 outgoing interlibrary loans.
- Joslyn Art Museum receives numerous requests from around the world for images of art works from its permanent collection. These images are used in textbooks, exhibition catalogues, books, and other publications; featured on posters, cards, and calendars; and used in films, videos, or television programs. In 2006, there were 105 completed reproduction requests, most for works by Karl Bodmer.



Annual Report
January 1 - December 31, 2006

Joslyn Art Museum
2200 Dodge Street
Omaha, Nebraska 68102-1292

Telephone 402-342-3300
Facsimile 402-342-2376
www.joslyn.org

Museum Hours
Tuesday-Saturday 10 am-4 pm
Sunday noon-4 pm
Closed Monday and major holidays.
Extended hours for some special exhibitions.

Museum Admission
\$7 adults; \$5 senior citizens (62+) and college students (with ID); \$4 ages 5-17; free for children ages four and younger and Joslyn members. Group rates available. Public admitted free Saturdays 10 am-noon, funded by a grant from the Peter Kiewit Foundation. Additional charge for some special exhibitions.

ON THE COVER, TOP TO BOTTOM: Donald Jackson, with Chris Tomlin, Adam and Eve, Genesis 2:4-25 (detail), ink and pigment on vellum, © 2003 The Saint John's Bible and Saint John's University; Nam June Paik (Korean, 1932-2006), Couch Potato (detail), 1994, mixed media, Museum purchase with funds from Patron Circle for Contemporary Art and Art Purchase Fund; Maynard Dixon, The Pony Boy (Blackfeet Indians, Montana) (detail), 1920, oil on canvas, Collection of W.C. Foxley; Louis Agassiz Fuertes (American, 1874-1927), Whooping Cranes (detail), watercolor on paper, Gift of Michael and Gail Yanney in memory of Mrs. Sydney L. Cate and Mr. Willis A. Strauss

ABOVE, TOP TO BOTTOM: 75th Anniversary Members Event, November 18; Illuminating the Word: The Saint John's Bible Members-only Opening, January 21; Jazz on the Green, August 3; Family Fun Day, March 12

BOARD OF GOVERNORS

Executive Committee

Michael B. Yanney
Chairman

John E. Gottschalk
Vice Chairman

Bruce R. Lauritzen
Secretary

David A. Rismiller
Treasurer

Charles F. Heider

John P. Nelson

John P. Schlegel, S.J.

Walter Scott

Frederick J. Simon

Nancy C. Webster

James R. Young

Marian Andersen

Robert D. Bates

Cynthia Bay

Susan Butler

Barbara Call

J. Brad Chapman

Sylvia B. Cohn

Mary Daugherty

William Donaldson

Admiral James O. Ellis, Jr.,
USN

Marshall Faith

Terrence J. Ferguson

Rex Fisher

Sue Fletcher

Norma Fuller

Wayne Gary Gates

Elinor Greenfield

Sharon Griffin

Marianne Hawkins

Howard L. Hawks

David Jacobson

Kirk Kellner

Mary Landen

Melissa Marvin

Frank Matthews

Beverly Maurer

Cynthia McGowan

Terry Moore

Daniel Neary

Diane Nelson

Rubens J. Pamies, M.D.

Lenore Polack

Karen Riley

Thompson Rogers

Suzanne Scott

William S. Singer, M.D.

Allan Tubach

David Wiesman

Philip J. Willson

John K. Wilson

Harold W. Andersen
Governor Emeritus

YEAR IN REVIEW



This was a year of both great accomplishment and anticipation for Joslyn Art Museum, with the Board, staff, members, and the public looking to the fall and the beginning of the Museum's 75th year. Building to that diamond jubilee celebration, the months leading to the November anniversary kick-off sparkled.

Like bookends on the year, two exciting awards came at the beginning and end of 2006. In January, *Child* magazine announced that Joslyn was named one of "The 10 Best Art Museums for Kids" following the publication's first-ever data-driven survey of the nation's cultural centers, identifying those that make the visual arts accessible and fun for kids. Recognized for the comprehensiveness of its educational programming, Joslyn is in extraordinary company on *Child's* list, joined by The Art Institute of Chicago, the Metropolitan Museum of Art, and the Los Angeles County Museum of Art, among others. And in December, Creighton University bestowed upon Joslyn the Presidential Medallion for 2006. The honor is a public acknowledgement of the role that Joslyn plays in enriching the quality of life in Omaha.

A packed exhibition schedule began with *Illuminating the Word: The Saint John's Bible*, pages from the first handwritten and illuminated Bible commissioned since the advent of the printing press more than 500 years ago. The Saint John's Bible, commissioned by Saint John's University and Abbey, is under the artistic direction of Donald Jackson, one of the world's foremost calligraphers and Senior Scribe to Her Majesty Queen Elizabeth's Crown Office. Jackson was special guest at Joslyn for the opening weekend of *Illuminating the Word*, and more than 1,700 members (a record attendance) overflowed the Witherspoon Concert Hall to hear Jackson speak. Special thanks to Mike McCarthy, a Joslyn patron and Saint John's University alum, for his role in bringing this extraordinary exhibition to the Museum.

The Saint John's Bible is created using medieval techniques, so Joslyn was happy to present concurrently *French Donjons: Castle of Coucy, Medieval Life in Miniature*. This historically accurate representation of the *donjon* (residential tower) that graced the castle of Coucy in France astonished school children and adults alike. The massive model featured some 2,500 figures and showed everything from a siege to a knighting scene.

One of the most exciting events in the performing arts in 2006 was Opera Omaha's presentation in March of Puccini's *Madama Butterfly*. Internationally acclaimed artist and Omaha resident Jun Kaneko was chosen to

create the stage sets and costumes for the stunning new production. In a cultural collaboration in conjunction with the opera, the Museum presented the exhibition *Jun Kaneko: Madama Butterfly*, featuring Kaneko's drawings for his costumes and sets. The artist also presented an informative free public gallery talk about his work for the production.

In late April, Joslyn debuted *Close Proximity: Photographs from the Wild* by Howard Buffett and Thomas Mangelsen. Over 40 images by each of these two renowned Nebraskans with a passion for wildlife photography and conservation were united in this show. A unique exhibition event presented a panel discussion by both artists, and the show kicked-off a spring and summer filled with a variety of photography exhibitions including *Visions of Victory Presented by Mutual of Omaha* and *Edward Weston: A Photographer's Love of Life*. Joslyn and Mutual of Omaha collaborated on *Visions of Victory*, a touring show, popular with the summer and College World Series crowds, of 147 photographs of some of the greatest moments in sports history. A virtual survey of the career of arguably the most influential photographer of the 20th century, *Edward Weston* included personal letters and postcards and a selection of brilliant, vintage Kodachrome color transparencies on view to the public for the first time.

Joslyn and Moscow's State Pushkin Museum of Fine Arts concluded an exchange of children's art with the exhibition *A Cultural Exchange: Children's Art from the State Pushkin Museum of Fine Arts* at Joslyn. In 2005, works by Joslyn Art School students were displayed in Moscow at the Pushkin's Children's Center.

The fall began with *Art on the Edge: Modern & Contemporary Art from the Permanent Collection*, a major exhibition that, for the first time, filled all the Scott Pavilion galleries with contemporary paintings, sculpture, and works on paper, some on view for the first time. Along with this energetic exhibition, Joslyn planned a unique musical component, *Art for Your Ears*. The Museum held an open competition for local musicians to create original compositions inspired by works in the show. Making use of podcast technology, the competition drew numerous entries judged by both experts and the general public, and visitors delighted in listening to both the entries and the winning compositions as they toured the exhibition with their own MP3 players or with Joslyn's audio guides.

A year-long exhibition in the educational Mind's Eye Gallery, *Faces from the Land: A Photographic Journey Through Native America* also opened in the fall and presents 40 photographs of powwow dancers combined with personal narratives written by the subject describing the tribal significance of their regalia and dance.

The Print Gallery showcased a highly original animated, operatic woodcut motion picture, *The Jackleg Testament*, by artist Jay Bolotin, along with woodcuts and prints related to the film. Bolotin came to Joslyn to perform a concert of musical selections from the film and also led a week-long workshop and gave a lecture at the University of Nebraska at Omaha.

The exhibition year concluded with the opening of *Legends of the West: The Foxley Collection*, the inaugural show of Joslyn's 75th anniversary year. Bill Foxley, former Omahan, cattleman, and art collector, has amassed one of the finest collection of art of the American West in the world. The exhibition showcases 56 paintings and some sculpture from his collection by legendary artists such as Bierstadt, Moran, Remington, and Russell. The exhibition also features a resource area, the Cowboy Corral, for young visitors. A fully-illustrated exhibition catalogue, for which I was delighted to write a narrative essay about Bill and his collection, was produced for the show.

In other publication news, Joslyn was proud to release *Thomas Moran's West: Chromolithography, High Art, and Popular Taste*, written by Joni L. Kinsey, Associate Professor of Art History at the University of Iowa and a recognized authority on Moran. Thomas Moran's watercolor paintings of Yellowstone, published as a portfolio of 15 chromolithographs, were the first color images of our first national park widely available to the general public and regarded as the finest example of chromolithography ever produced. In 2001, a complete *Yellowstone National Park* portfolio was given to Joslyn by Gail and Michael Yanney and Lisa and Bill Roskens. *Thomas Moran's West*, made possible in part by Joslyn Art Museum's Bodmer Society, features these renowned works. The book was named "Best Western Art Book" of 2006 by the National Cowboy and Western Heritage Museum (Oklahoma City, OK).

A translated and fully annotated manuscript of Volume 1 of Prince Maximilian's North American Journals has been accepted for publication by the University of Oklahoma Press; the book is expected to be available for sale in early 2008. The first of three volumes, this account describes Maximilian's journey with artist Karl Bodmer from Germany to St. Louis, May 1832 to April 1833. Publication of Volumes 2 and 3 is anticipated in 2009-11. The national significance of the journals has been noted by Dr. James Billington, Librarian of Congress, who believes their publication will rank among the most important in decades of books on early 19th-century frontier history. The Museum especially thanks Rhonda and Howard Hawks for their generous lead gift that made the Maximilian Journals project possible. Additional support came from the

Bodmer Society, the National Endowment for the Humanities, and several generous patrons. A complete list of donors begins on page 21.

The permanent collection galleries were alive with changes this year as art moved in and out through loan and acquisition. Joslyn works were in demand for exhibitions around the world, including Grant Wood's *Stone City, Iowa*; Jackson Pollock's *Galaxy*; and Thomas Hart Benton's *The Hailstorm*.

In an exciting reciprocal loan, two beloved 19th-century French paintings from the Museum collection were loaned to the Staatsgalerie Stuttgart in Stuttgart, Germany, while two of that museum's significant works came to Joslyn. Joslyn loaned Claude Monet's *The Meadow (La Prairie)* and William Adolphe Bouguereau's *The Return of Spring (Le Printemps)*. In exchange, Joslyn received Paul Gauguin's *E Haere oe i hia (Where are you going?)* and Piet Mondrian's *Composition in White, Red and Blue*.

In addition to these Stuttgart paintings, visitors were able to see several other exciting works on loan to the Museum, including *Western Forest* by Robert Duncanson, one of the first African American artists to gain international recognition for his landscape painting, and two paintings by George Catlin, *Black Hawk*, *Muk-A-Tah-Mish-O-Kah-Kaik* and *Hidatsa Hunting Buffalo*, on loan from the Field Museum of Natural History, Chicago, in honor of Joslyn's 75th anniversary.

A highlight of the acquisition year is *Couch Potato*, a 1994 contemporary video sculpture by Nam June Paik, one of the most influential artists of the late 20th century who pioneered electronic techniques to realize the artistic potential of video and television. The sculpture is a Museum purchase with funds from Patron Circle for Contemporary Art and Art Purchase Fund.

Special programs and events were plentiful this year, and in June, Joslyn celebrated the art of collecting with the Sarah & George 2006 Art Auction. Presented by the Joslyn Art Museum Association (JAMA), this benefit for the Museum's education programs offered a premier opportunity to purchase original artworks in a silent auction. Over 75 artworks by artists living in or with ties to this region were assembled for the lively event. Special thanks to honorary chairman Sylvia B. Cohn and co-chairmen Ann Blunk and Susan Knapp of JAMA.

The Museum celebrated international connections in February with a special free concert for Joslyn members at the Holland Performing Arts Center. Baritone Marcelo Guzzo captivated the capacity crowd, followed by an extraordinary performance by virtuoso pianist Alexei Podkorytov and gifted violinist Olga Smola.

Joslyn's website — www.joslyn.org — has a new look and new features and promotes an enhanced Joslyn identity. The redesigned site is visually striking and easy

to navigate, and highlights the strong and diverse permanent collection, special programs and educational opportunities, and areas of excellence within the Museum.

On November 11, Joslyn kicked off its year-long 75th anniversary celebration with an extraordinary gala event including buffet dining, gallery viewing, “open house” programs, and a spectacular entertainment event — a concert by Grammy® Award winning producer/songwriter David Foster and his special friends Michael Bubl  and Gladys Knight. Over 850 guests celebrated late into the night. Special thanks to honorary chairmen Suzanne and Walter Scott and chairman Barbara Call. From this remarkable fundraising event, \$500,000 was added to the Museum’s endowment for education.

At the 75th anniversary gala, I was thrilled to announce a plan for a new sculpture garden. The garden is the focal point of a campus redevelopment plan that will dramatically change the face of Joslyn’s grounds and will include a variety of important 19th- and 20th-century sculptures, as well as contemporary works by internationally renowned artists. The campus redevelopment project represents the second significant capital initiative undertaken by Joslyn since it opened in 1931, preceded by the addition of the Scott Pavilion in 1994. The \$10 million Joslyn campus project includes six major features: Sculpture Garden, Grand Plaza, Discovery Garden, Fountain Wall, Reflecting Pool, and Parking Garden. Work will begin on Phase One, focusing on campus redefinition, the parking garden, and the creation of a new entrance off of Dodge Street, in April 2007.



(Above left) Artist rendering of Dodge Street Entrance Drive and Reflecting Pool. Construction on the new sculpture garden will begin in spring 2007.



(Below left) Artist rendering of the Grand Plaza.

The anniversary kick-off continued on November 18 with a members-only event featuring a video interview between art collector Bill Foxley and myself in celebration of the exhibition *Legends of the West: The Foxley Collection*. Additionally, Neil Harris, Ph.D., Preston and Sterling Morton Professor in the Department of History at the University of Chicago, presented an illustrated lecture in honor of the Museum’s anniversary. On November 25, the Museum opened up the anniversary celebration to the public with a free family festival, and, on November 29, the Museum’s actual opening date in 1931, Joslyn hosted a free public concert, just as it did 75 years earlier to the day. The concert featured Russian pianist Stanislav Ioudenitch and vocalists Jennifer Rivera and Alison Trainer.

Joslyn was delighted to welcome Anne El-Omami as Director of Education, Academic Affairs, and Public Programs early in the year. Anne, former Joslyn Curator of Education from 1981 to 1986, returns to the Museum from Philadelphia, Pennsylvania’s University of the Arts. Her career commitment to the arts and arts education is impressive, and she is providing great leadership, developing programs and activities that educate and enrich the Museum’s public.

The Board of Governors welcomed three new members who will begin their terms in 2007: Steve Erwin, President, U.S. Bank; Michael R. McCarthy, Chairman, McCarthy Group, Inc.; and W. David Scott, President and CEO, Magnum Resources, Inc. And a special thanks to Sylvia “Babe” Cohn who was given the honor of Lifetime Member of the Board of Governors. I am deeply grateful to Mike Yanney, who retired in December as chairman of Joslyn’s Board of Governors, a post he held for a decade. I invite you to read the special tribute to Mike on page 6. Through his guidance, leadership, and dedication, the Museum has transformed itself and is positioned for success in the decades to come. Mike will be succeeded in January by James R. Young, President and Chief Executive Officer of Union Pacific Corporation.

My thanks to Mike and Jim and the entire Board of Governors, the Joslyn Art Museum Association, Joslyn staff, and our donors, members, and volunteers for an outstanding year of significant accomplishments and the promise of wonderful new things to come in the next 75 years. The Museum ended the year with a balanced budget, and I invite you to read on for detailed departmental information and financial data contained in this report.

J. Brooks Joyner
Director

A TRIBUTE TO MICHAEL B. YANNEY, BOARD CHAIRMAN, 1997-2006

In 2006, Michael B. Yanney retired as chairman of Joslyn's Board of Governors, a post he held for a decade.



Mike Yanney and his wife, Gail, at the Sarah and George Art Auction

Mike first came on the Museum's board in 1974 and then became a member of the executive committee in 1987. He was elected chairman in 1997. Mike's tenure has been defined by a strong commitment to transforming Joslyn into a true community institution that is more accessible and relevant to a wide audience. At his encouragement, the Museum revamped its exhibition schedule to include annual "anchor" shows — large displays of varied and important artworks drawing visitors of all ages from the metro, as well as regional, national, and often international visitors. The first, 1998's *Degas and the Little Dancer*, grew around a sculpture in Joslyn's permanent collection. Later shows — all some of the highest attended in the Museum's history — included the acclaimed *Searching for Ancient Egypt* (1999), *Dale Chihuly: Inside & Out* (2000), and *Millet to Matisse* (2003), to name a few. The Museum's educational offerings increased markedly with the introduction of these "blockbuster" showings, welcoming visitors for related classes, lectures, and family events. These teaching and learning opportunities, while drawing the public to the Museum, have also earned Joslyn the reputation as one of the "Ten Best Art Museums for Kids" in the nation (*Child* magazine, 2006).

Impressively, Museum attendance jumped from about 180,000 per year to the current annual average of about 250,000 per year under Yanney's leadership. The large annual exhibitions and additional programs were key to that success. Further attendance was encouraged through the creation of special festivals, corporate days, and the presentation of special concerts, featuring international performers, made through connections of Yanney.

Strength through membership is a hallmark of Yanney's influence on the Joslyn Art Museum of today. He developed innovative methods to expand the membership base, including the creation of partnerships with The Nebraska Medical Center and other businesses and organizations. Yanney also encouraged the Museum to form special collectors' groups — the Bodmer Society and the Contemporary Art Society — as part of its high-end membership offerings. Dues from these societies impact the Museum's annual collecting decisions and abilities in the areas of Western American and contemporary art. During Yanney's chairmanship, with the support of the Bodmer Society and a major lead gift from Rhonda and Howard Hawks, Joslyn reinvigorated a major project already attracting the attention of art

historians and scholars around the globe — the translation and publication of the journals of Prince Maximilian of Wied, the German explorer who engaged Swiss artist Karl Bodmer for his 1832-34 journey into the interior of North America. The journals are a major step toward establishing the Museum as a center of excellence in Art of the American West.

Yanney hired Joslyn's current director, J. Brooks Joyner in 2001, and the two have worked in tandem to initiate and facilitate a number of strategic partnerships that have and will greatly enhance the Museum's standing in the art world. Yanney, who has businesses in Russia, was instrumental in bringing Joslyn together with two of that country's major museums: the State Russian Museum in St. Petersburg and Moscow's State Pushkin Museum of Fine Arts. This partnership resulted in the Joslyn-organized exhibition *Artists of the American West* touring in Russia and the popular *Russia's Age of Elegance* exhibition at Joslyn. In 2005 and 2006, Joslyn and the Pushkin exchanged exhibitions of children's art on the subject of war and peace.

A strong supporter of education, Yanney has encouraged Joslyn's relations with the Omaha Public Schools (OPS), and in recent years, the Museum has made the school tour program more accessible and free for OPS students. In what might be the most significant partnership to date, Joslyn, OPS, and Creighton

University have, during Yanney's tenure, formed a "campus" community, with land exchanges and joint planning resulting in a new football stadium for Joslyn's neighbor to the east, OPS's Central High School, and the Museum's recently-announced sculpture garden and campus



(Left to right) Mike Yanney, Joslyn Board Chairman; Walter Scott, Joslyn Art Museum Foundation Board Chairman and Joslyn Board member; Bruce Carpenter, Senior Vice President, HDR, Inc.; Sandra Reding, Joslyn Art Museum Foundation President; and J. Brooks Joyner, Joslyn Director, gather at the model of the Museum's planned sculpture garden and campus redevelopment at the November 11 anniversary gala

redevelopment plan, only the second major capital initiative undertaken by Joslyn since it opened 75 years ago.

In addition to this project, Yanney has aided Joslyn Art Museum with work that he has done to expand financial support for the Museum from private, city, and county sources; recruit a strong and visionary board of governors; and create the Joslyn Art Museum Foundation to manage and increase the Museum's endowment.

Although no longer Chairman, Mike remains on the Board of Governors Executive Committee, and he and his wife, Gail, continue in their enthusiastic and generous support of the Museum.

75TH ANNIVERSARY KICK-OFF EVENTS



The opening of the Joslyn Memorial on November 29, 1931, gave Omaha a sensational cultural building that, 75 years later, remains an exceptional educational and community resource and a gathering place at the heart of Omaha's cultural life. In November, the Museum began its diamond jubilee year with the extraordinary events detailed on this page. In 2007, the anniversary celebration will continue with special programs centered around quarterly themes: *Celebrate Our Collections* (January-March); *Celebrate Special Exhibitions* (April-June); *Celebrate Our Building and Campus* (July-September); and *Celebrate Community Partnerships* (October-December).

Gala Concert - November 11

Over 850 guests attended this anniversary kick-off celebration that included buffet dining, open house programs, viewing of the special exhibition *Legends of the West: The Foxley Collection* on its opening day, and a



Senator Ben Nelson and his wife, Joslyn Board member Diane Nelson, with gala chairman and Joslyn Board member Barbara Call (second from right) and gala honorary chairman and Joslyn Board member Suzanne Scott (right)

spectacular entertainment event — a concert by Grammy® award-winning producer and songwriter David Foster and his special friends, gifted and acclaimed big band singer Michael Bublé and all-time great soul singer Gladys Knight. Event honorary chairmen were Suzanne and Walter Scott. Chairman was Barbara Call.



Michael Bublé (left) chats with guests, including Warren Buffett (right), before the anniversary gala concert



Dr. Robert Singer (left) with David Foster



Susie Severson, Joslyn's Assistant Curator of Education – Adult and Special Programs, talks with a gala guest at an open house display of educational materials in the Lauritzen Gallery of Art of the American West



Guests enjoy the food and festivities in the Storz Fountain Court (right)

Members Event - November 18

Celebrating Joslyn's 75th anniversary and the exhibition *Legends of the West: The Foxley Collection*, this Members-only event began with the airing of a video interview between collector Bill Foxley and Joslyn Director J.

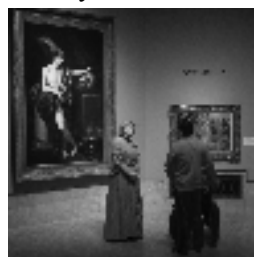


Brooks Joyner. Then, Neil Harris, Ph.D., Preston and Sterling Morton Professor in the Department of History at the University of Chicago, presented the lecture *Expansive Influences: American Art Museums as Community Institutions*.



Neil Harris, Ph.D. (above) delivers a slide-illustrated lecture featuring images of Joslyn; Members view the *Legends of the West* exhibition (left)

Family Festival - November 25

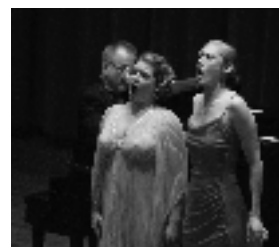


This family-friendly focus on Joslyn's building and rich history of art collecting included guided tours, art-making projects, and complimentary birthday cake.

Museum founder Sarah Joslyn, portrayed by Sonia Keffer (left), greets visitors in the galleries

Public Concert - November 29

On November 29, Joslyn Art Museum hosted a free public concert in its 1,000-seat Witherspoon Concert Hall, just as it did 75 years earlier to the day, on the occasion of the Museum's opening to the public. The evening featured three performers: Russian pianist Stanislav Ioudenitch and two American opera singers — mezzo soprano Jennifer Rivera and coloratura soprano Alison Trainer.



Alison Trainer (left) and Jennifer Rivera (right), both of New York City, perform

EXHIBITIONS

Exhibitions organized by Joslyn, or in collaboration with Joslyn, are denoted with an asterisk (*).

Illuminating the Word: The Saint John's Bible
January 21 - April 16

French Donjons: Castle of Coucy, Medieval Life in Miniature
February 4 - May 14

*Jun Kaneko: Madama Butterfly**
February 25 - May 7

A Cultural Exchange: Children's Art from the State Pushkin Museum of Fine Arts
April 22 - June 4

*Close Proximity: Photographs from the Wild by Howard Buffett and Thomas Mangelsen**
April 29 - June 4

*Visions of Victory Presented by Mutual of Omaha**
June 17 - August 13

*Nebraska Skies: Michael Thomas Howard**
June 17 - September 10

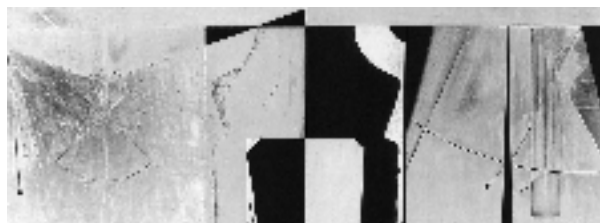
Edward Weston: A Photographer's Love of Life
June 24 - August 13

*Art on the Edge: Modern & Contemporary Art from the Permanent Collection**
September 2 - October 22

Faces from the Land: A Photographic Journey Through Native America
September 2 - September 30 (2007)

Jay Bolotin: The Jackleg Testament
September 30 - December 31

*Legends of the West: The Foxley Collection**
November 11 - February 25 (2007)



CREDITS ABOVE, CLOCKWISE FROM UPPER LEFT: Donald Jackson, with Chris Tomlin, Adam and Eve, Genesis 2:4-25 (detail), ink and pigment on vellum, © 2003 The Saint John's Bible and Saint John's University; Edward Weston, Pepper, 1929, gelatin silver print, Gift of Mr. and Mrs. John W. Longstreth, Collection of The Dayton Art Institute; Ben Marra, Raymond Cree, Confederated Tribes of the Umatilla/Yakama/Cree, archival photographic print, © Ben Marra 2002, Courtesy of the artist; Ross Bleckner, 1944-1945, 1977/80, oil and wax on canvas, Memorial purchase in memory of E. Stanton Miller, II, 1980, Collection of Joslyn Art Museum; Howard Buffett, Cabbage Patch, Tanzania, June 1999, crystal archival print, Gift of The Howard G. Buffett Foundation, 2006; Maynard Dixon, The Pony Boy (Blackfeet Indians, Montana), 1920, oil on canvas, Collection of W.C. Foxley; Harold E. "Doc" Edgerton, Golf Drive by Densmore Shute, 1938, © The Harold E. Edgerton 1992 Trust, Courtesy Palm Press, Inc.

COLLECTIONS

Acquisitions

Paintings

Gift of

Frances and Louie Blumkin in memory of Frances Batt and Margy Schneider

Maureen Cavanaugh (American, contemporary), *The Dip*, 2005, acrylic on canvas

Michael and Gail Yanney in memory of Mrs. Sydney L. Cate and Mr. Willis A. Strauss

Louis Agassiz Fuertes (American, 1874-1927), *Whooping Cranes*, watercolor on paper

Museum purchase

Kenneth Adkins (American, contemporary), *Los Angeles*, 2004, pen ink, mixed media, coffee, and wine on paper



Louis Agassiz Fuertes (American, 1874-1927), *Whooping Cranes*, watercolor on paper, Gift of Michael and Gail Yanney in memory of Mrs. Sydney L. Cate and Mr. Willis A. Strauss

Sculpture

Gift of Rhonda and Howard Hawks

David Helm (American, contemporary), *Meltdown*, 2005, wood, glass, steel, and brass

Museum Purchase with funds from Patron Circle for Contemporary Art and Art Purchase Fund

Nam June Paik (Korean, 1932-2006), *Couch Potato*, 1994, mixed media

Prints, Drawings, and Photographs

Gift of

the Artist

Dale Chihuly (American, born 1940), *Ikebana Drawing*, 2006, acrylic on paper

Larry Welo (American, born 1951), *The Scenic Route*, 2002, etching with drypoint

Larry Welo (American, born 1951), *Wayward*, 1999, etching with drypoint and roulette

the Getscher-Wilkinson Collection in honor of Joslyn's 75th Anniversary

Charles Albert-Waltner (French, 1846-1925), *Jacob Blessing his Sons*, etching after Rembrandt (1609-1669)

Charles Albert-Waltner (French, 1846-1925), *Portrait of Sir John Everett Millais* (1829-1896), 1880, etching and drypoint after the artist's self-portrait

Charles Albert-Waltner (French, 1846-1925), Annotated proof for *Portrait of the Prince of Wales (Edward VII) in Military Dress*, etching

Charles Albert-Waltner (French, 1846-1925), Proof for *Quand tu seras fleur devenue (When You Become a Flower)*, ca. 1905, drypoint

Charles Albert-Waltner (French, 1846-1925), *Repos*, from *L'Art*, 1874, etching after Louis Leloir (1843-1884)

Charles Albert-Waltner (French, 1846-1925), Proof for *Portrait of Mrs. Sarah Siddons, the Actress*, etching with chalk and pencil after Sir Thomas Gainsborough (1727-1788)

Charles Albert-Waltner (French, 1846-1925), Final proof for *Portrait of Mrs. Sarah Siddons, the Actress*, etching after Sir Thomas Gainsborough (1727-1788)

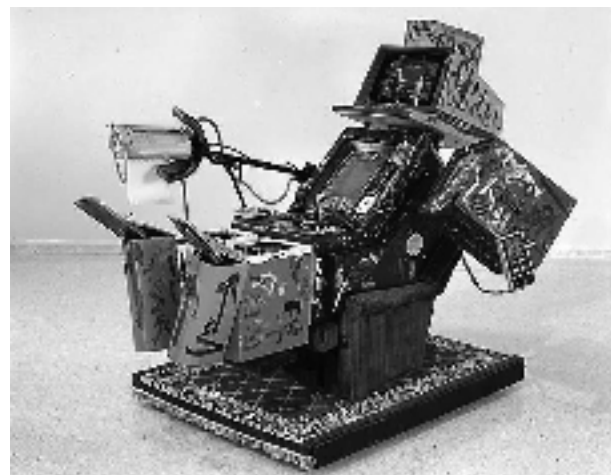
Artist Unknown (French, 19th century), *The New Paris Opera House*, from *Harper's Weekly*, September 14, 1867, wood engraving

Artist Unknown (German/Austrian, 20th century), *Salzburg, Mirabell im Schnee*, early 1900s, color aquatint with stop-out and etching

Claude Ferdinand Gaillard (French, 1834-1887), *St. Sébastien*, etching and engraving on heavy Japan paper after Andrea Mantegna (1431-1506)

Claude Ferdinand Gaillard (French, 1834-1887), *St. Sébastien*, 1877, etching and engraving on chine collé after Andrea Mantegna (1431-1506)

Romeyn de Hooghe (Dutch, 1645-1708), *The Pillaging*, plate 3 from L. van den Bosch's *Toonel des Oorlogs . . .*, 1675, etching



Nam June Paik (Korean, 1932-2006), *Couch Potato*, 1994, mixed media, Museum purchase with funds from Patron Circle for Contemporary Art and Art Purchase Fund



Melchoir Küsel (German, 1626-1683), *Discord*, 1679, etching, Gift of the Getscher-Wilkinson Collection in honor of Joslyn's 75th Anniversary

Melchoir Küsel (German, 1626-1683), *Discord*, 1679, etching

Georg Lührig (German, 1868-1957), *Freya und die Riesen* from *Pan*, vol. II, 1896, color lithograph

François Perrier (French, 1590-1650), *Marsyas and an Allegorical Statue of Nature*, from the Medici Gardens, Plate 18 from *Les Statues antiques de Rome*, 1638, unidentifiable technique

Félicien Rops (Belgian, 1833-1898), *Poisson Rare*, 1876, etching

Félicien Rops (Belgian, 1833-1898), *Ecce Diabola Mulier!*, drypoint

Raphael Sadeler (?) (Flemish, 1584-1632), *The Martyrdom of a Saint*, engraving

Charles Joseph Travies de Villers (French, 1804-1859), *Faut avouer que l'gouvernement a une bein drôle de tête*, from *La Caricature*, December 22, 1831, crayon lithograph after Charles Philip

Museum Purchase

John James Audubon (American, born Santo Domingo, 1785-1851), Robert Havell, Jr. (American, born England, 1793-1878), engraver, *Hooping (sic) Crane, Young*, 1835, Plate CCLXI from *Birds of America*, 1827-38, hand-colored aquatint, etching, and line engraving on double elephant folio paper

John James Audubon (American, born Santo Domingo, 1785-1851), Robert Havell, Jr. (American, born England, 1793-1878), engraver, *White-headed Eagle*, 1828, Plate CLXXVIII from *Birds of America*, 1827-38, hand-colored aquatint, etching, and line engraving on double elephant folio paper

Seth Eastman (American, 1808-1875), *Dacotah Indian*, pencil on paper

Seth Eastman (American, 1808-1875), *Encampment on the Leona—Texas*, January 24, 1849, pencil on paper

Seth Eastman (American, 1808-1875), *Indian Graveyard Near the Falls of St. Anthony*, pencil on paper

Seth Eastman (American, 1808-1875), *Live Oaks at Fredericksburg—Texas*, January 21, 1849, pencil on paper

Gifts to the Resource Collection

Gift of Michael and Gail Yanney

Artist Unknown (Russian), lacquer box with scene after *The Boyar's Wedding* by Konstantin Makovsky

J.H. Colton & Company, New York, *Nebraska and Kansas, Territory Acquired from Mexico by the Gadsen Treaty*, 1856, 1856, hand-colored lithograph

Loans

Loans from Joslyn Art Museum

Desert Caballeros Western Museum (Wickenburg, AZ)

exhibition: *The Nature of the Beast: Audubon's Amazing Four-Legged Creatures and More* (October 28 - December 31, 2006)

works by John James Audubon, John Woodhouse Audubon, and Victor Gifford Audubon lent: 54 selections from *The Viviparous Quadrupeds of North America*, 1945-48, lithographs, Museum purchase (2004.19.1-150)

other works lent: John James Audubon, *Orange Crowned Warbler*, Plate CLXXVIII, from *The Birds of America*, Havell edition, 1827-35, hand-colored etching and engraving, Gift of Mrs. Richard Einstein in memory of Leola Brandeis Baer (1961.484); John James Audubon, *Three Toed Woodpecker*, Plate CXXXII, from *The Birds of America*, Havell edition, 1827-35, hand-colored etching and engraving, Gift of the Omaha Delphian Council (1952.81); John James Audubon, *White-headed Eagle*, Plate XXXI, from *The Birds of America*, Havell edition, 1827-35, hand-colored etching and engraving, Museum purchase (2006.20.1); John James Audubon, *Purple Grackle or Common Crow Blackbird*, Plate 221, from *The Birds of America*, Bien edition, 1858-60, chromolithograph, Museum purchase (1992.26); John James Audubon, *Virginian Partridge*, Plate 289, from *The Birds of America*, Bien edition, 1858-60, chromolithograph, Gift of Marian and Harold W. Andersen (1995.56)

Lancaster Museum of Art (Lancaster, PA)

exhibition: *Visions of the Susquehanna: 250 Years of Paintings by American Masters* (August 5 - December 30, 2006)

venues: Lancaster Museum of Art

Susquehanna Art Museum (Harrisburg, PA)

work lent: Karl Bodmer, *Susquehanna near Harrisburg, Pennsylvania*, 1832, watercolor on paper, Gift of the Enron Art Foundation (1986.49.43)

Museum of Fine Arts, Houston (Houston, TX)

exhibition: *The Modern West: Landscapes 1890 - 1950*
(October 29, 2006 - June 3, 2007)

venues: Museum of Fine Arts, Houston

Los Angeles County Museum of Art (Los Angeles, CA)

work lent: Thomas Hart Benton, *The Hailstorm*, 1940, egg
tempera and oil on canvas mounted on panel, Gift of the
James A. Douglas Foundation (1952.11)

The National Gallery (London, England)

exhibition: *Americans in Paris*

(February 22, 2006 - January 28, 2007)

venues: The National Gallery (London)

Museum of Fine Arts, Boston

The Metropolitan Museum of Art (New York, NY)

work lent: Frederick Childe Hassam, *April Showers, Champs
Elysées, Paris*, 1888, oil on canvas, Museum purchase (1946.30)

Oklahoma City Museum of Art (Oklahoma City, OK)

exhibition: *Romantic Visionaries: Images of Storms in European
and American Art, 1750 - 1950* (April 20 - August 13, 2006)

work lent: Philippe-Jacques de Louthembourg, *The Smugglers
Return*, 1801, oil on canvas, Gift of Mr. & Mrs. Arthur
Wiesenberger (1960.299)

Philbrook Museum of Art (Tulsa, OK)

exhibition: *In the Studios of Paris: William Bouguereau and His
American Students* (September 1, 2006 - March 30, 2008)

venues: Philbrook Museum of Art

Appleton Museum of Art (Ocala, FL)

The Frick Art and Historical Center (Pittsburgh, PA)

work lent: William Adolphe Bouguereau, *The Knitting Girl*, 1869,
oil on canvas, Bequest of Jessie Barton Christiancy (1931.106)

Schirn Kunsthalle Frankfurt (Frankfurt am Main, Germany)

exhibition: *I Like America* (September 27, 2006 - January 7, 2007)
works by Karl Bodmer lent (all are watercolors, 1832-34, Gift of
the Enron Art Foundation):

Niätöhsä, Atsina Chief (1986.49.282.a); *Inkas-kínne, Siksika*

Blackfeet Chief (1986.49.285); *Men of the Mandan Buffalo*

Bull Society (1986.49.265.a); *Artifacts* (1986.49.312);

Massika, Sauk Man (1986.49.235); *White-tailed Deer* (1986.49.343)

other works lent (both Gift of the Enron Art Foundation):

After Karl Bodmer, *Encampment of the Piekann Indians*, Tableau

43 from *Travels into the Interior of North America*, aquatint

and engraving on paper (1986.49.542.13); Peter Rindisbacher,

War Dance of the Sauk and Fox, watercolor on paper (1986.49.499)

Staatsgalerie Stuttgart (Stuttgart, Germany)

exhibition: *Claude Monet—Fields in Spring*

(May 20 - September 24, 2006)

works lent: William Adolphe Bouguereau, *Return of Spring*
(*Le Printemps*), 1886, oil on canvas, Gift of Francis T. B.

Martin (1951.889); Claude Monet, *The Meadow*

(*La Prairie*), 1879, oil on canvas, Gift of Mr. William

Averell Harriman (1944.79)

Wheelwright Museum of the American Indian (Santa Fe, NM)

exhibition: *Arthur Amiotte: Collages 1988 - 2006*

(November 19, 2006 - September 29, 2007)

work lent: Arthur Amiotte, *New Horse Power in 1913*, 1996,
acrylic and collage on canvas, Museum purchase (1997.26)



William Adolphe Bouguereau (French, 1825-1905), *Return of Spring* (*Le Printemps*), 1886, oil on canvas, Gift of Francis T. B. Martin, loaned to Germany's Staatsgalerie Stuttgart for the exhibition *Claude Monet—Fields of Spring*

Whitney Museum of American Art (New York, NY)

exhibition: *Picasso and American Art*

(September 28, 2006 - September 16, 2007)

venues: Whitney Museum of American Art

San Francisco Museum of Modern Art

(San Francisco, CA)

Walker Art Center (Minneapolis, MN)

work lent: Jackson Pollock, *Galaxy*, 1947, aluminum paint, oil
paint, and gravel on canvas, Gift of Peggy Guggenheim (1949.164)

Loans to Joslyn Art Museum

Lenders to the permanent collection (originating in 2006)

Anonymous (3); The Field Museum, Department of
Anthropology; W. C. Foxley; The Getscher-Wilkinson
Collection; Leo Koenig; Private Collection, courtesy of W. M.
Brady & Co., New York; Staatsgalerie Stuttgart

**Lenders to special exhibitions organized by, or in
collaboration with, Joslyn Art Museum**

Jay Bolotin; Howard G. Buffett Foundation; W. C. Foxley;
Michael Thomas Howard; Jun Kaneko; Thomas D. Mangelsen
and Images of Nature Gallery; Carl Solway Gallery

EDUCATION PROGRAMS

Tours

858 total tours; 23,902 total participants
(397 student tours, 15,832 participants; 461 adult tours, 8,070 participants)

Lectures, Gallery Talks, and Special Programs for Adults

57 programs; 6,066 total participants

Inspiration to Illumination: Collaborative Processes and The Saint John's Bible (January 21); 1,724 participants
Donald Jackson, Artistic Director and Illuminator of the Saint John's Bible (Members' opening lecture for the exhibition *Illuminating the Word: The Saint John's Bible*)

Inspiration to Illumination: Collaborative Processes and The Saint John's Bible (January 22); 800 participants
Donald Jackson, Artistic Director and Illuminator of the Saint John's Bible (public lecture for the exhibition *Illuminating the Word: The Saint John's Bible*)



Donald Jackson, Artistic Director and Illuminator of *The Saint John's Bible*, lectures at the Members-only opening, January 21

Jun Kaneko: Madama Butterfly (March 4); 85 participants
Artist Jun Kaneko (public gallery talk for the exhibition)

I Love You, I Hate You Too (April 21); 67 participants
Special film screening presented in conjunction with the University of Nebraska-Lincoln

Edward Weston: The Picasso of Photography (June 24); 125 participants
Alexander Nyerges, Director and CEO, The Dayton Art Institute (public lecture for the exhibition *Edward Weston: A Photographer's Love of Life*)

The Technique and Aesthetic of Edward Weston's Large Format Photography (July 1); 63 participants
Michael Flecky, S.J., Professor of Fine Arts and Photography, Creighton University (public gallery talk for the exhibition *Edward Weston: A Photographer's Love of Life*)

Conservators and Museums (July 21); 40 participants
Adam Jenkins, Mellon Fellow in Objects Conservation, Philadelphia Museum of Art (talk for Joslyn Art Museum docents and local conservators)

Mary Magdalene and the Art of Biblical Interpretation (July 22); 236 participants
Susan A. Calef, Ph.D., New Testament scholar, Creighton University (public lecture)

The Da Vinci Code: Sorting Fact from Fiction (August 27); 218 participants
Creighton University Professors Ted Bohr, S.J.; Susan A. Calef, Ph.D.; and Eileen Dugan, Ph.D. (public lecture)

Defining the Edge (October 7); 51 participants
Norman Geske, art historian and Director Emeritus of the Sheldon Memorial Art Gallery (public gallery talk for the exhibition *Art on the Edge: Modern & Contemporary Art from the Permanent Collection*)

Selections from Jay Bolotin's The Jackleg Testament (November 5); 71 participants
Artist Jay Bolotin (public film screening and musical program for the exhibition *Jay Bolotin: The Jackleg Testament*)

Video Interview and Lecture (*Expansive Influences: American Art Museums as Community Institutions*) (November 18); 287 participants
Video Interview – one of America's foremost collectors of Western American Art, Bill Foxley, and Joslyn Director J. Brooks Joyner
Lecture – Neil Harris, Ph.D., Preston and Sterling Morton Professor in the Department of History, University of Chicago (Members-only event celebrating Joslyn's 75th anniversary kick-off and the exhibition *Legends of the West: The Foxley Collection*)

AIA Public Lectures, free talks presented by the Lincoln-Omaha Society of the Archaeological Institute of America (AIA):
Isle of Druids and Celtic Warriors: Britain on the Eve of Roman Invasion (March 26); 55 participants
Simon James, Ph.D., University of Leicester, England, School of Archaeology and Ancient History
Hitting the Road: Archaeological Investigation of Nebraska's Historic Trails (April 2); 86 participants
Paul Demers, Assistant Professor, Department of Anthropology and Geography, University of Nebraska-Lincoln

Artist Jun Kaneko (right) autographs a book after a gallery talk in front of his costume designs for Opera Omaha's production of *Madama Butterfly*, March 4



The Valley of the Golden Mummies: The Bahariya Oasis, Mummies, Health and Disease in Ancient Egypt (October 11); 74 participants
Robert J. Littman, Professor of Classics, University of Hawaii at Manoa

Architecture and Democracy: The Law Courts of Ancient Athens (November 5); 37 participants
Rhys F. Townsend, Ph.D., Associate Professor of Art History from Clark University, Worcester

Appetite for Art: Director's Choice, gallery talks featuring one work from the collection each session, led by Joslyn Director J. Brooks Joyner, followed by lunch:
Russian Recipe: Konstantin Egorovich Makovsky's Russian Beauty and Cat (January 31); 99 participants
Light Fare: Thomas Moran's The Pearl of Venice (February 28); 108 participants
Music to the Eyes: Pierre-Auguste Renoir's Young Girls at the Piano (March 21); 94 participants
Come An' Get It!: Charles Marion Russell's A Serious Predicament (May 2); 92 participants
Plastered Pop: George Segal's Times Square at Night (May 23); 82 participants
A Tasty Allegory: Giovanni Raggi's The Battle of Imbros 1717 (An Allegory of a Navel Victory) (September 26); 85 participants
Pastoral Picnic: Chauncey Bradley Ives' Shepherd Boy and Kid (October 17); 83 participants
Literature, Lovers and Lunch: William Holman Hunt and Arthur Hughes' Oriana (November 21); 85 participants

Art:21 – Art in the Twenty-First Century, a series of PBS video screenings and discussion presented in partnership with the Bemis Center for Contemporary Arts:
Play (January 7); 12 participants

CU at Joslyn, lectures presented in partnership with Creighton's University College:
The Handwriting on the Wall: The Bible in Art (January 14); 75 participants
Leonard J. Greenspoon, Klutznick Professor of Jewish Civilization and Professor of Classical and Near Eastern Studies, Creighton University
A Gesture of Love?: The Language of Gestures in Ancient Greek Vase Painting (March 18); 50 participants
Christina A. Clark, Assistant Professor of Classical and Near Eastern Studies, Creighton University
Beyond the Hollywood Western: Cowboys and Indians in American Art (April 22); 45 participants
Heather Fryer, Assistant Professor of History, Creighton University
Life at Versailles (May 6); 55 participants
Jan Lund, Adjunct Assistant Professor of Modern Languages and Literatures, Creighton University
More Handwriting on the Wall: The Text of the New Testament and the Apocrypha in Art (September 16); 42 participants
Leonard J. Greenspoon, Klutznick Professor of Jewish Civilization and Professor of Classical and Near Eastern Studies, Creighton University

Lascaux and the Origin of Art and the Sacred (October 21); 140 participants
Richard J. White, Professor of Philosophy, Creighton University
That Other French Revolution: The French Academy Versus the Impressionists (November 18); 147 participants
Jan Lund, Adjunct Assistant Professor of Modern Languages and Literatures, Creighton University

Members Mingles (gallery talks for Joslyn members):
John Wilson, Director of Curatorial Affairs, Joslyn Art Museum, for *Illuminating the Word: The Saint John's Bible* (March 28); 53 participants
John Wilson, Director of Curatorial Affairs, Joslyn Art Museum, for *Edward Weston: A Photographer's Love of Life* (July 25); 51 participants
J. Brooks Joyner, Director, Joslyn Art Museum, for *Legends of the West: The Foxley Collection* (December 5); 30 participants

New on View, gallery discussions and walking tours showcasing new acquisitions, objects on loan to Joslyn, or exciting reinstallations:
Paul Gauguin's *E Haere oe i hia (Where are you going?)* (August 6); 11 participants
John Wilson, Director of Curatorial Affairs, Joslyn Art Museum
Piet Mondrian's *Composition in White, Red and Blue* (September 10); 9 participants
Susie Severson, Assistant Curator of Education, Adult and Special Programs, Joslyn Art Museum
Nam June Paik's *Couch Potato* (October 8); 7 participants
John Wilson, Director of Curatorial Affairs, Joslyn Art Museum
Sir Thomas Lawrence's *Portrait of Sir Samuel Shepherd (1760-1840)* (November 19); 10 participants
John Wilson, Director of Curatorial Affairs, Joslyn Art Museum

Sacred Subjects: A Sunday Afternoon Series, programs presented in conjunction with the exhibition *Illuminating the Word: The Saint John's Bible*:
Feasting on the Word: The Bible in Early Christianity (February 5); 48 participants
J. William Harmless, S.J., Professor of Theology, Creighton University
Illuminating the Dark Ages: Medieval Art and The Saint John's Bible (February 12); 44 participants
Joanne Sowell, Ph.D., Associate Professor of Art and Art History, University of Nebraska at Omaha
Medieval Manuscripts: Methods and Materials (February 19); 54 participants
Sheila Fairbrass, Ph.D., Gerald R. Ford Conservation Center
Sacred Music (February 26); 45 participants
Rev. Charles Jurgensmeier, S.J., D.M.A., Assistant Professor of Fine and Performing Arts, Creighton University

Third Thursday Art Encounters Club, presented in partnership with The Nebraska Medical Center's Health & Wellness Club, offers docent-guided tours of Joslyn's collections and special exhibitions:

Illuminating the Word: The Saint John's Bible and French

Donjons: Castle of Coucy, Medieval Life in Miniature (February 16); 42 participants

Jun Kaneko: Madama Butterfly and Illuminating the Word:

The Saint John's Bible (March 16); 60 participants

French Donjons: Castle of Coucy, Medieval Life in Miniature and The Ancient World (April 20); 33 participants

Close Proximity: Photographs from the Wild by Howard Buffett and Thomas Mangelsen and Native American Craft Traditions (May 18); 25 participants

Women in Art and Landscape Painting (June 15); 15 participants

Edward Weston: A Photographer's Love of Life and

Connections: Art, Style, Fashion (July 20); 25 participants

If I Were the Curator and Ritual in Art (August 17);

16 participants

Art on the Edge: Modern & Contemporary Art from the Permanent Collection and How Did They Do That?

(September 21); 9 participants

Art Encounters Special Fall Event with John Wilson, Joslyn Director of Curatorial Affairs (October 19);

35 participants

Legends of the West: The Foxley Collection and Art on the Edge:

Modern & Contemporary Art from the Permanent Collection (November 16); 17 participants

Visualizing Literature: Book Club for Art Lovers, discussions linking literature and the visual arts, presented in partnership with the Nebraska Medical Center's Health & Wellness Club: *To Kill a Mockingbird* by Harper Lee (February 14);

20 participants

The Bonesetter's Daughter by Amy Tan (April 11);

32 participants

The Irish Game: A True Story of Crime and Art by Matthew Hart (September 12); 27 participants

Black Elk Speaks: Being the Life Story of a Holy Man of the Oglala Sioux as told through John G. Neihardt by Black Elk (November 14); 35 participants

Art Classes

10,673 total participants

Art Classes and Camps

544 sessions

6,450 participants

Art-Making with School Tour

129 sessions

3,089 participants

Girl Scout and

Boy Scout Programs

19 sessions

240 participants

Kiewit Summer Fun

28 sessions

544 participants

Riley Gallery Reception

4 events

275 participants

Russian Exchange Reception

1 event

75 participants

Irina Zakharova (right) organizer of the exhibition *A Cultural Exchange: Children's Art from the State Pushkin Museum of Fine Arts* and program coordinator for the Pushkin's Children's Center, talks with Joslyn Director J. Brooks Joyner at the exhibition reception, April 27



Outreach Programs

63,587 total participants

Outreach Trunks

184 requests

56,556 participants

Resource Packets and Videos

168 requests

3,981 participants

Discovering Art

34 sessions

1,102 participants

After-School Art Program

26 sessions

316 participants

Outreach Talks

18 talks

978 participants

*Art Express**

4 talks

102 participants

Latino Fest at El Museo Latino

200 participants

*Passport Partners Drawing Classes**

4 talks

102 participants

*Third Thursday Art Encounters***

10 events

250 participants

*A partnership with UNMC, UMA, and The Nebraska Medical Center

**A partnership with The Nebraska Medical Center's Health & Wellness Club

Community Events

6,586 total participants

Sponsor Days – 350 participants

Illuminating the Word: The Saint John's Bible (January 29)

Illuminating the Word: The Saint John's Bible and Castle of Coucy: Medieval Life in Miniature (April 1)

Jazz on the Green (August 6)

Saint John's University Men's

Chorus Concert (February 26); 400 participants

Family Fun Day – Illuminating the Word: The Saint John's Bible and Castle of Coucy: Medieval Life in Miniature (March 12); 2,202 participants



The Saint John's University Men's Chorus, February 26

OPPD Family Day (April 1); 149 participants
 Gregorian Schola Performance (April 1); 75 participants
 Corporate Partners Days – 150 participants
Jun Kaneko: Madama Butterfly (April 2)
Visions of Victory Presented by Mutual of Omaha (July 23)
 Military Appreciation Day – *Illuminating the Word: The Saint John's Bible and Castle of Coucy Medieval Life in Miniature* (April 8); 59 participants
 Passport Partners Day – *Illuminating the Word: The Saint John's Bible and Castle of Coucy Medieval Life in Miniature* (April 9); 139 participants
Lewis & Clark: The Journey Home Family Festival (a partnership with the Nebraska Lewis & Clark Bicentennial Commission) (September 9); 1,108 participants
 75th Anniversary Family Festival (November 25); 931 participants
 Holiday Lights Family Festival & Cowboy Gathering (December 17); 1,023 participants



The Lewis & Clark Fife and Drum Corps performs during the Lewis & Clark: The Journey Home Family Festival, September 9

Hands-On Resources

24,326 total participants

Scott EdTech Gallery
 16,080 participants

Art Packs
 606 requests
 2,037 participants

Audio Guide
 209 participants

Kids Can Do Art
 6,000 participants
 (estimated)



Kids and parents alike react to the "Dragon Tales" puppet show by Urban Prairie Puppet Company at the medieval-themed Family Fun Day for the exhibitions Illuminating the Word: The Saint John's Bible and Castle of Coucy: Medieval Life in Miniature, March 12

Programs for Teachers and Students

4,828 total participants

College Night
 (February 17 &
 October 20)
 731 participants

Student Art Exhibition
 (March 24-April 2)
 115 student artists;
 works submitted by
 73 art educators;
 450 participants
 (awards ceremony)

National Art Education
 Association Sessions
 (March 25)
 109 participants

Math Professors
 Conference (March 31)
 140 participants

Russian Exchange
 Luncheon and Reception
 for Educators (April 28)
 15 participants

Prairie Visions Leadership
 Academy (June 6-9)
 83 participants

Omaha Public Schools
 Visiting Artist Presentation
 (August 29)
 180 participants

Lewis & Clark: The Journey Home (a partnership with the Nebraska Lewis & Clark Bicentennial Commission) (September 8)
 1,276 participants

Celebrate Creativity
 (a partnership with the Omaha Symphony)
 4 events
 (October 24, 26, 27, 31)
 1,394 participants

EdFest and Teacher In-Services
 12 sessions
 450 participants



Bus loads of 4th graders arrive at Joslyn Art Museum for a musical performance by Arvel Bird, gallery visits, and art activities in celebration of Lewis & Clark: The Journey Home, September 8

MUSIC PROGRAMS

Music

First Friday JAM

12th season began in the fall of 2006

1,596 in attendance during the 2006 year

Acoustic Groove (January 6)

Sarah Benck and The Robbers (February 3)

The Turfmen (March 3)

Paul Haar Quartet (April 7)

Blues Society of Omaha All-Stars (October 6)

OK Sisters (November 3)

Christine Sheil-Salhany (December 1)

Jazz on the Green

22nd year

46,000 in attendance

World Port (July 6)

Susie Thorne & Friends (July 13)*

Stefan Gaspar & The Jazz Factory (July 20)

Omaha Big Band (July 27)

Kerry Strayer Septet (August 3)

Blues Society of Omaha All-Stars (August 10)

Heidi Joy Jazz Band (August 17)

Robert Glaser & the Sing, Sing, Swing Orchestra (August 24)

**cancelled due to inclement weather*

Holiday Under Glass

13th year

1,744 in attendance

University of Nebraska at Omaha Concert Choir (December 5)

Creighton University Chamber Choir (December 6)

South High School Ambassadors (December 7)

Central High School Singers and Bel Canto (December 8)

Papillion/La Vista Vocal Music (December 12)

Piano Students of the Omaha Conservatory of Music
(December 13)

Bloomer Elementary School (December 14)

St. Wenceslaus Catholic Handbell Choir (December 15)

Papillion-La Vista South High School Choir (December 19)

Bryan High School Surround Sound (December 20)

Bellevue East High School Take II (December 21)

Central High School Strings and Jazz Band (December 22)

Special Concert

Marcello Guzzo, Alexei Podkorytov, and Olga Smola at

Holland Performing Arts Center (February 19)

2,098 in attendance



CREDITS ABOVE, TOP TO BOTTOM: Paul Haar, First Friday JAM, April 7; the crowd gathers for Jazz on the Green, August 3; members of the Kerry Strayer Septet perform at Jazz on the Green, August 3

JOSLYN ART MUSEUM ASSOCIATIONS

The Joslyn Art Museum Associations (JAMA) of Omaha and Southwest Iowa serve as support groups for the Museum, volunteering time, enthusiasm, and fundraising abilities in a variety of capacities including planning annual fundraisers for the Museum and sponsoring a wide range of education programs and special events.

2006 JAMA Officers

Omaha

President	President Elect &
Lori Williams	Recording Secretary
Vice President Education	Karen Sundell
Rita Price	Corresponding Secretary
Vice President Fundraising	Sally Lusk
Melissa Marvin	Treasurer
Vice President Social	Mary Kerr
Cindy Irvine	Advisor
	Pat Wagner

Southwest Iowa

President	Treasurer
Cathy Born	Jacque Diez
Secretary	Advisor
Cheryl Downing	Martha Winum

JAMA Special Projects, Fundraisers, & Art Trips

Special Projects

Illuminating the Word: The Saint John's Bible Director's Preview
(January 20)
College Nights (February 17, October 20)
Family Fun Day (March 12)
Student Art Exhibition (March 24-April 2)
New Members Event (April 6)
EdFest / K-12 Teachers' Receptions (November 4 & 10)
Holiday Staff Reception (December 6)
Holiday Lights Family Festival & Cowboy Gathering
(December 17)
JAMBassadors
Art Classes Scholarships
Education Department Support
Sign Language Interpreters



(Left to right) Sue Conine, Illuminating the Word Director's Preview committee member; Lori Williams, President of the Joslyn Art Museum Association; and Nessie Swedlund, Illuminating the Word Director's Preview chairman, January 20

Fundraisers

Please Your Palate Cooking School featuring Chef Scott Landry of Lake Charles, Louisiana (April 20)



(Left to right) Lori Williams, President of the Joslyn Art Museum Association; Chef Scott Landry; and Cooking School chairman Joani Mullin, April 20

Sarah & George 2006 Art Auction (June 2)

How to Learn to Love the Art You Love to Hate Lecture and Luncheon featuring Milton Esterow, renowned editor and publisher of ARTnews, and celebrating the exhibition Art on the Edge: Modern & Contemporary Art from the Permanent Collection (October 9)



Milton Esterow, Lecture Luncheon, October 9

Art Trips

Art Trip to Chicago, IL, featuring the special exhibition Girodet: Romantic Rebel at The Art Institute of Chicago (April 27)

Art Trip to New York, NY, featuring the special exhibition Americans in Paris, 1860-1900 at The Metropolitan Museum of Art (November 14-15)



(Left to right) Art Auction honorary chairman Sylvia B. Cohn and co-chairmen Susan Knapp and Ann Blunk, June 2

BODMER SOCIETY AND CONTEMPORARY ART SOCIETY EVENTS

Bodmer Society

The Bodmer Society, named after Karl Bodmer, the remarkable artist who accompanied Prince Maximilian's 1832-34 expedition to North America, was created to foster interest in Western and Native American art. Membership dues support the unique programs of the Margre H. Durham Center for Western Studies at Joslyn Art Museum.

February 26

Special presentation by Dr. Joni Kinsey, Professor of Art History at the University of Iowa, and author of Joslyn's publication, *Thomas Moran's West: Chromolithography, High Art, and Popular Taste*. Kinsey, a preeminent authority on Thomas Moran, discussed the significance of this publication which focuses on Moran's Yellowstone National Park portfolio of chromolithographs.

April 22

Private breakfast with Dr. Heather Fryer, Assistant Professor of History at Creighton University, prior to her public lecture, *Beyond the Hollywood Western: Cowboys and Indians in American Art*, part of the CU at Joslyn lecture series.

May 23

Private reception and tour of The Nebraska State Historical Society's Gerald R. Ford Conservation Center to learn more about art conservation from expert Julie A. Reilly, Associate Director for Conservation. Members had a unique opportunity to view a selection of artwork from the Foxley Collection that was undergoing conservation treatment.

Bodmer Society members watch a demonstration at the Gerald R. Ford Conservation Center, May 23



August 23

Reception and presentation with Eric Widing, Department Head of American Art at Christie's of New York City and a recognized authority on American painting and sculpture. Widing's lecture — *From the Colonial to the Cubist, a Brief History of American Art at Auction* — focused on the trends in collecting American art and the process involved in an art auction.

October 3

Bodmer Society Annual *Rendezvous* Dinner, hosted by Mutual of Omaha, First National Bank, and an anonymous donor. Western art collector and Bodmer Society member Bill Foxley was the special guest speaker. He discussed his collecting philosophy, the status of his collection, and his experiences as a collector. Members also previewed a few artworks included in the exhibition *Legends of the West: The Foxley Collection*.

November 28

Private dinner party at Arader Gallery in New York City hosted by W. Graham Arader, III. Members had the opportunity to meet members of the National Chapter of the Bodmer Society.

Contemporary Art Society

The Contemporary Art Society is a dynamic group whose mission is to encourage, support, and stimulate the collection and study of contemporary art at Joslyn. Members share a passion for the exciting art of our time with others who share a similar interest and help foster a new audience among those who are becoming acquainted with these important works.

January 22

Sheldon Memorial Art Gallery's Sheldon Forum hosted a special reception and gallery talk for members. Dan Siedell, Sheldon Curator, led a gallery talk in the exhibition *Singular Expressions: A Sheldon Invitational*.

(Left to right) John Wilson, Ph.D., and Carl Solway engage in a gallery dialogue at the Contemporary Art Society Annual Dinner, September 27



June 13

Special presentation by author and art historian Dr. David Carrier, Champney Family Professor at Case Western Reserve University and Cleveland Institute of Art. Dr. Carrier discussed his new book, *Museum Skepticism: A History of the Display of Art in Public Galleries*, which traces the birth, evolution, and decline of the public art museum as an institution meant to spark democratic debate and discussion.

September 27

Contemporary Art Society Annual Dinner with Carl Solway, a preeminent dealer of contemporary art. Prior to the dinner, members learned more about the creative process of several artists featured in Joslyn's exhibition *Art on the Edge* through an insightful dialogue between Solway and John Wilson, Joslyn Director of Curatorial Affairs, followed by a tour of the exhibition.

November 5

Members enjoyed a private brunch with artist Jay Bolotin and viewed the exhibition *Jay Bolotin: The Jackleg Testament*.

November 28

Special reception and tour of a private art collection at the home of Contemporary Art Society members Monte and Duane Thompson. The Thompsons are long time art collectors and members viewed their collection which includes a variety of works from local, regional, national, and international artists.

PATRON EVENTS

Patron Members

Patron members are a vital link in the long tradition of philanthropy and personal involvement that has been at the heart of Joslyn.

March 5

Patron members-only brunch with Joslyn Director J. Brooks Joyner and Anne El-Omami, Joslyn Director of Education, Academic Affairs, and Public Programs. Following the brunch, El-Omami discussed her vision for new and exciting education initiatives at Joslyn.

August 3

Patron and Contributor members' night at *Jazz on the Green*. Following a private reception and tour of the exhibition *Edward Weston: A Photographer's Love of Life*, members enjoyed reserved seating at the concert which featured the Kerry Strayer Septet.

Young Art Patrons

The Young Art Patrons offers engaging social and educational events for a rising generation of arts admirers between the ages of 25 and 40. These events emphasize the richness of the Museum's special exhibitions and collections, provide exposure to a variety of music programs, and feature privileged access to the Museum's staff and board.

January 27

Collaborative event with independent, non-profit cinema, Film Streams. Following a private, Cuban-themed reception, members viewed the film *Buena Vista Social Club* about a group of legendary and aging Cuban performers gathered together by an American musician to preserve their "lost" style of pre-Castro music.

February 16

Conversation with a Curator with John Wilson, Joslyn Director of Curatorial Affairs. Following a wine and cheese reception, members learned more about how curators plan and install exhibitions from conception to completion.

March 16

Collaborative event with Opera Omaha's Bravo Club. Members enjoyed a Japanese-themed reception followed by a preview of Opera Omaha's production of *Madama Butterfly*. Hal France, guest conductor, presented an enlightening preview of Puccini's popular masterpiece followed by a gallery talk of the set and costume designs in the Joslyn exhibition *Jun Kaneko: Madama Butterfly* with John Wilson, Joslyn Director of Curatorial Affairs.

May 18

Second Annual *Art on Tap* celebration. YAP members and other young professionals had an opportunity to visit the Museum free of charge and meet others who share a similar interest in the arts. Following a beer sampling, young professionals viewed the exhibition *Close Proximity: Photographs from the Wild* by Howard Buffett and Thomas Mangelsen.

June 22

Members viewed the exhibition *Edward Weston: A Photographer's Love of Life* and learned more about the artist considered one of the most influential photographers of the 20th century. Alexander Nyerges, Director and CEO of the Dayton Art Institute (Dayton, OH) and curator of the exhibition, discussed Edward Weston's most famous images as well as works never, or rarely, before seen.

July 13

Members had a special evening at *Jazz on the Green* including a pre-concert beer sampling, a tour of the exhibition *Michael Thomas Howard: Nebraska Skies*, and reserved concert seating. (Note: Due to inclement weather, the July 13 *Jazz on the Green* concert, and part of this program, were cancelled.)

August 11

Members had an exclusive tour of three artists' studios at the Creighton Faculty Art Studio, Omaha ClayWorks, and Laurie and Charles Photographs. This *Art Crawl in August* provided an opportunity for members to meet the artists at these local studios, learn about their work, and see demonstrations of the creative process.



During the Art Crawl in August, Young Art Patrons visit Omaha ClayWorks to see potters demonstrating their craft, August 11

September 21

Wine and cheese reception and tour of a private art collection at the home of Betiana and Todd Simon. This was a rare opportunity to view contemporary works of art and learn more about the process of collecting from avid art collectors.

October 6

Members received free admission, reserved seating, and complimentary refreshments during a special evening at *First Friday JAM* featuring the Blues Society of Omaha All-Stars.

December 17

Members and their families took part in an afternoon of entertainment and education at the YAP *Family Day* during the Holiday Lights Family Festival & Cowboy Gathering. Members had guided tours of the exhibition *Legends of the West: The Foxley Collection* and enjoyed complimentary hot chocolate and cider at a private reception.

VOLUNTEERS

Education

JAMBassadors

Emma Anderson
Kelsey Anderson
Samantha Ashcraft
Kristina Backlund
Alma Becerril
Cannon Biggs
Alicia Bones
Chelle Boomgaarden
Alex Borovski
Stephanie Bowling
Michaela Bradley
Caitlin Brayfield
Mary Beth Broshihan
Lisa Burn
Kristin Carosella
Drew Carryer
Abby Chambers
Kevin Cheairs
Emily Dixon
Lauren Domenge
Liatte Dotan
Maura Egan
Michelle Ellis
Samantha Evans
Gail Fanders
Laura Ferris
Danielle Fezouati
Ben Fischer
Melissa Forster
Neil Greiss
Caitlin Harding
Emily Harrison
Rebecca Harrison
Ashleigh Hartman
Katie Hedgpath
Candace Holmes
Mandy Homan
Chris Haug
Taylor Jahn
Anna Johnston
Elizabeth Kinzer
Tobie Kunkle
Mitch Laursen
Sara Leimbach
Melissa Long
Chelsea Lopez
Mindy Lorenz
Laura Leuschen
Samantha Mancuso
Kiana Mathew
Sarah McKee
Ben McLaughlin
Shelly McLaughlin
Sally Meginnis
Rachel Meredith
Callie Messick
Emily Mitchell
Kenzie Mohlman
Michelle Morrissey
Megan Mullin
Brookelynn Musil
Amanda Nelson
Anne Newman

Lexie Newman
Katie Paxton
Brittany Romaine
Maggie Rudersdorf
Taylor Saalfeld
Lindsay Schulz
Damir Selimovic
Irsa Shoiab
Natalie Stephen
Keelan Stewart
Samira Tella
Hayley Verboon
Toan Vuong
Elizabeth Wallace
Kim Weeks
Katie Williams
Kathryn Wolff
Katherine Woods
Teddy Woolman
Ben Wu
Katherine Zhu

Docents

*Emeritus Docents are
denoted with an asterisk (*).*

Pamela Acuff
Suzanne Arney
Judith Boelts
Joanne Bonifant
Cathy Born
Nancy Brune
Laura Burroughs
Marita Camp
Laura Chambers
Jean Circo
Barbara Donovan
Estelle Faier
Ethel Flannigan*
Elise Fowler*
Sara Foxley
Norma Fuller
Barbara Garinger
Edith Godfrey
Alice Gooder
Linda Gordman
Juliana Hahn
Milt Hanson
Jody Harvey*
Bob Hefflinger*
Veronica Hefflinger*
Jeanne Henry
Joyce Higgins
Pegge Hlavacek
Kate Holstein
Beth Ione Howard
Ila Dean Horn
Mary (Moran) Irving
Karen Dix Johnson
Jean Johnson
Noreen Johnson
Esther (Vernie) Jones
Barbara Lambries
Mary Lu Larson
Robert Lewis
Patricia Lontor
Sally Lusk

Maxine MacDonald
Marilyn Mangan
Linda Mathew
Ruth McKee*
Renee Mehrer
Teresa Meyer
Dorothy Morrow
Jean Munhall-Sitzman
Loy Nebergall*
Rose Nelson
Linda O'Hare
Dick O'Toole*
Mary Petty
William Pierson*
Lenore Polack
Rita Price
Joan Quelette
Pat Ranney
Kathi Rotella
Jan Sanderson
Judy Schafer
Judy Schram
Mary Jo Schulte
Joan Scott
Margaret Shearer
Frances Sherrard
Toni Shreve
Nan Sibbernson
Jan Sinram
Arlene Smith
Kathleen Smith
Sandra Squires
Jean Stillmock
Pat Strecker
Ellen Stoll
Mary Jo Stoll*
Doris Taulborg
Jenni Toebben
Sr. Adolorata Watson

Scott EdTech Gallery

Brooke Bergantzel
Jack Waldron

Joslyn Information

Assistants

Mary Ann Chaney
Elaine Dutton
Susan Henshaw
Barbara Maus
Mary Ellen McMahon
Lynda Mirvish
Alice Pauley
Jon Ryan
Jane Rumbaugh
Frank Schepers
Anne Shaughnessy
Lisa Stokes
Frances Taylor
Ruth Tempelmann

Library

Catherine Almeda
Jeanne Dalton
Linda Hickman
Jing Hu

Kari Fossum
Rose Hill
Heidi Jones
Mary Marchio
Mike Miller
Colin Quinn
Barbara Swick
Cynthia Vana

Membership

Marian Andersen
Cindy Bay
William Cody
Sylvia Cohn
Kim-Lien Dinh
Elinor Greenfield
Sharon Griffin
Jane Hagebush
Mary Jo Havlicek
Marianne Hawkins
Michelle Haynes
Mary Hills
Sarah Holmes
Teresa Hunzeker
Glen Johnson
Heidi Jones
Wendy Koontz
Carmel Krone
Vera Lewis
Beverly Maurer
Jeff Scott McCarthy
Diane Nelson
Pegg Noyes
Cathy Perry
Lenore Polack
Margaret Quinn
Karen Riley
Carol Russell
Frank Schepers
Anne Shaughnessy
Mary Kay Smid

Young Art Patrons

Elaine Buescher
Stuart Chittenden
Kent Cisar
Mike Jung
Kathy Magli
Charlie Melton
Kenny Rocker
Melissa Rowlet

Museum Shop

Dawn Burton

*In addition to the regular
volunteers listed above, Joslyn
Art Museum thanks the
"special occasion" volunteers
who gave of their time and
talents for exhibitions, music
series, and other special
programs throughout the year.
Thank you!*

DONORS

Donor gifts are to Joslyn Art Museum and its associated foundations.

Endowment

Visio: A Clear Vision for the Future

Visio: A Clear Vision for the Future
encompasses endowment and similar funds
for operations, exhibitions, and acquisitions.
The following are named funds that provide
support for acquisitions, programs, and projects.

Ethel S. Abbott Art Endowment Fund
Milton R. and Pauline S. Abrahams
Library Endowment Fund
Center for Education Endowment Fund
Center for Western Studies Art
Endowment Fund
Center for Western Studies
Endowment Fund
The Conboy Fund
The Jack Drew Endowment for 18th-
and 19th-Century Art
Gilbert M. and Martha H. Hitchcock
Endowment Fund
Lawrence R. and Jeannette James Art
Acquisition Fund
Sarah H. Joslyn Endowment Fund
Peter Kiewit Endowment Fund
Rismiller Endowment Art Purchase Fund
Rismiller Endowment Fund
Carolyn J. Scott Exhibition Fund
Robert H. and Mildred T. Storz
Endowment Fund
Gretchen Swanson Velde Joslyn
Endowment Fund

In addition to the named funds, the
donors listed below have made outright
gifts, estate gifts, or irrevocable planned
gifts to ensure that Joslyn Art Museum's
tradition of excellence continues for
years to come. The gifts also represent a
shared faith in the future of Joslyn as
the region's major resource for the
collection, preservation and
interpretation of the visual arts.

Anonymous (14)
Pauline B. Allen
Marian and Harold Andersen
Jo Anderson
Joan Angotti
The Anschutz Foundation
Nancy Askew
Jack Barnhart
Margaret and Hubert Bath

Thelma Beckler
Janet Bellinger
Dorothy and Lyman Bennett
Robert Benzel
James Bergquist
Barbara Birmingham
Bella and David S. Block
(Margaret Block)
Gertrude E. and Herman Brinkman
Nancy and Dan Brune
Barbara and James Call
Eric Carlson
Betty and Sydney Cate
Rosemary Christopherson
Joseph and Robert Cornell Memorial
Foundation
James Czarnecki
Shirley Daley
Jack Drew
Margre and Charles Durham
Del J. Ellis
Jane and John Ellsworth
Joel Faires and Dean Naegele
Eve Fisher
Mary E. Flannigan
John K. Fong
Norma and E. James Fuller
June and Ed Gauhari
Dodie and Elmer Gerfen
Elinor Greenfield
Sharon G. Marvin Griffin
Agnes Hamilton
Alice W. and Berchel H. Harper
Mary Jo Havlicek
Marianne and Fred Hawkins, Jr.
Mary and Charles F. Heider
Anunt Hengtrakul
Cecil Hicks
Ursula and Henry Hoffman
Mary and Richard Holland
Ila Dean Horn
Thomas Huerter and Chris Pilcher
Roger Hughes
Gilbert Johnson
Richard Jourdan
Mary and Nathan Kaiman
Leona and William Kernen
Helen Kistle
Helen and Ted Kolderie
Jack Kostich
Susie and Steve Kupka
Marian Leary
Ida and Walter Lenz

Howard Lewis
L. Zenaide Luhr
Sally and Graham Lusk
Irene and Joseph Malek
Francis T. B. Martin
Joan and Robert Masterson
Helen and Frank Matthews
Janet and James McClymond
Mary Pat and Richard McCormick
Cynthia and Thomas F. McGowan
Lyra Ann and Charles Monasee
Barbara and Michel Nelson
Judy and Ron Parks
Patty Patrick
Beverly and Gerald Pearson
Lenore and Joseph Polack
Rita M. Price
Marjorie Quinlan
Alice Naomi Reineke
Ephraim L. Marks and David M. Rice
Anne and David A. Rismiller
Polly and Jack Savage
Joan and Michael Schneeweiss
Terri and Phil Schrager
Rose Schupak
Suzanne and Walter Scott
Margaret Shearer
Eve and Frederick J. Simon
Nancy and Larry Smith
Shirley and Michael Sorrell
Edward F. Stapowich
Janice D. and Larry D. Stoney
Janet S. and Willis A. Strauss
John Thomas
Isabella B. Threlkeld
Dorothy and Stanley Truhlsen
Dorothy and Allan Tubach
Alice Ungar
Vaclav Vytracil
Patricia A. and Judd F. Wagner
Webster Family Foundation
Louise Wickstrum
Wiesman Family
Robert Getscher and Harry Wilkinson
Louis Williams
Philip J. Willson
Gail W. and Michael B. Yanney
Barbara P. and Robert P. Youngman

Art Purchase

Alice Dale Harper Estate



Mike McCarthy (left) discusses a page of *The Saint John's Bible* with Leona and Bill Kernen — both families were among the sponsors of the exhibition in Omaha — at the Illuminating the Word Director's Preview, January 20

The North American Journals of Prince Maximilian of Wied
(Three translated and fully annotated volumes describing Prince Maximilian's 1832–34 journey with artist Karl Bodmer across North America and up the Missouri River)

\$250,000–\$500,000

Rhonda and Howard Hawks

\$100,000–\$249,999

Bodmer Society
National Endowment for
the Humanities

\$50,000–\$99,999

Charles W. Durham
Marlene and J. Joe Ricketts

\$25,000–\$49,999

Robert Daugherty
Dorothy and Stanley M. Truhlsen

\$5,000–\$24,999

Arader Galleries
Ann and Steve Berzin
Judy and Terry Haney
Susan and Michael Levens
Pinnacle Bank
Phyllis and Del Toebben

Patron Circle

for Contemporary Art

(Support for the acquisition of contemporary art)

ConAgra Foods Foundation
Carmen and John Gottschalk
Richard D. Holland

Chris Pilcher and Thomas J. Huerter
Kim and Bruce Lauritzen
Lozier Foundation
Joan and Robert Masterson
Omaha Steaks International
Karen and Doug Riley
Terri and Phil Schrager
Suzanne and Walter Scott
Ann and Kenneth E. Stinson
Philip J. Willson
Gail W. and Michael B. Yanney

Gifts for Exhibitions

Illuminating the Word:

The Saint John's Bible

William A. Fitzgerald Family
Judy and Terry Haney
Charles and Mary Heider Family
A. William Kernen Family
Bill and Bunnie Kizer
Wende Lindsey-Kotouc and John Kotouc
Mike McCarthy Family
Wayne and Eileen Ryan
Gerald Timmerman Family
James Timmerman Family
Catholic Mutual Group
Dillon Foundation
Douglas County Commissioners
William and Mary Lindsay
Omaha World-Herald
SilverStone Group
AAA Rents & Event Services
Nebraska Educational
Telecommunications
Spirit 88.9 FM

French Donjons: Castle of Coucy,

Medieval Life in Miniature

Suzanne and Walter Scott
Douglas County Commissioners
Energy Systems
Omaha World-Herald

Jun Kaneko: Madama Butterfly

Joan Gibson and Donald Wurster

Visions of Victory Presented by

Mutual of Omaha

Mutual of Omaha, in cooperation
with Pindar Press, NY
Omaha World-Herald

Edward Weston: A Photographer's

Love of Life

Omaha Steaks International
Omaha World-Herald

Art on the Edge: Modern & Contemporary Art from the Permanent Collection
Omaha Steaks International
Annette and Paul Smith
Marilyn Offutt Sullivan and
Richard Sullivan
Philip J. Willson
Omaha World-Herald

Faces from the Land: A Photographic Journey Through Native America

Bank of the West
Lynne and John Boyer
KPMG
Robert H. Storz Foundation

Jay Bolotin: The Jackleg Testament

Omaha Steaks International

Legends of the West:

The Foxley Collection

Bodmer Society of Joslyn Art Museum
City of Omaha
Douglas County
Durham Foundation
Mutual of Omaha
First National Bank
Marlene and J. Joe Ricketts
Gail W. and Michael B. Yanney
Lenore Polack
Omaha World-Herald

Gifts for Operations, Programs, and Exhibitions

(Gifts to Joslyn Art Museum or one of its support groups)

\$100,000 and above

City of Omaha
Douglas County
Suzanne and Walter Scott
U.S. Bank
Gail W. and Michael B. Yanney

\$50,000–\$99,999

Durham Foundation
Nancy and Michael R. McCarthy
Mutual of Omaha
Peter Kiewit Foundation

\$25,000–\$49,999

Dr. C.C. and Mabel L. Criss Foundation
Energy Systems Company
First National Bank
Nebraska Arts Council
Omaha Steaks International
Peter Kiewit Sons', Inc.
Marlene and J. Joe Ricketts

\$10,000-\$24,999

Blue Cross Blue Shield
of Nebraska
Booz Allen Hamilton
Wendy and Henry Breck
Catholic Mutual Group
Esping Family Foundation
First Data Western Union Foundation
Carol Gendler
Carmen and John Gottschalk
Foundation
Mary and Charles Heider
Mammel Foundation
Oriental Trading Company
Lenore Polack
Jane and Thompson Rogers
Saint John's University
Robert H. Storz Foundation
Marilyn Offutt Sullivan and
Richard Sullivan
Gilbert C. Swanson Foundation
U.S. Cellular
Webster Family Foundation
Weitz Family Foundation
Wells Fargo Bank
Whole Foods Market
Philip J. Willson



A ribbon-cutting begins an evening honoring U.S. Bank and David and Anne Rismiller for their generous gifts to rename Gallery 16 The U.S. Bank – David and Anne Rismiller Gallery; (Left to right) Steve Erwin, U.S. Bank President and Joslyn Board member; Anne Rismiller; David A. Rismiller, Joslyn Board Treasurer; Walter Scott, Joslyn Art Museum Foundation Board Chairman and Joslyn Board executive committee member; and Joslyn Director J. Brooks Joyner, September 29

\$5,000-\$9,999

Bank of the West
John M. Bates Charitable Trust
ConAgra Foods Foundation
Harper Family Foundation
Kathleen and William Kizer
Linda Klaasmeyer
KPMG

Kutak Rock, LLP
Qwest Foundation
SilverStone Group
Annette and Paul Smith
Whitmore Charitable Trust

\$1,000-\$4,999

Aaron Ferer and Sons' Company
Anne Stuart Batchelder
Judy and Robert Bates
Lynne and John Boyer
ConAgra Foods Company
Creighton University
William C. Foxley
Burdette Fredrickson
Norma and E. James Fuller
Great Western Bank
Rhonda and Howard Hawks
Iowa West Foundation
Lamson, Dugan and Murray, LLP
Lincoln Financial Group
Mary and William Lindsay
Ira Lipman
Marilyn and Darrel Moreland
Beth Schrager
UNICO Group, Inc.
Union Pacific Corporation
Urban Omaha

\$500-\$999

Offutt Officers Spouses Club
Dorothy Peters
Winifred and Lewis Pinch
Anne and David A. Rismiller

\$100-\$499

Michaela and John Blazek
Jan and Art Burtscher
Christine and Roger Corbit
Mary and Joseph Daugherty
Kathy and Wayne Gary Gates
Donald Higgins
Fred and Teresa Hunzeker
Mary Kaiman
Susan and Michael Lebens
Michael W. Lenzen
Ardyth Low
Anne and John P. Nelson
NP Dodge Company
Omaha Public Power District
Ivel and John Reed
Ann and Kenneth Stinson
Tricia and Mark Weber
Shirley and Jim Young

**75th Anniversary
Gala Underwriters**

*Special thanks to
Suzanne and Walter Scott*

The Ahmanson Foundation
Judy and Jack Baker
Betty and David Baxter
Cindy and Mogens Bay
Susan and Irving Blumkin
Borsheim's Fine Jewelry and Gifts
Dawn and Doug Buchanan
Barbara and James Call
Karla and Scott Cassels
Carol and Brad Chapman
Sylvia B. Cohn
ConAgra Foods
Jill and Dick Coyne
Pam and Jim Crowe
Mary and Joe Daugherty
Dixon Family Foundation
Beverly and Bill Donaldson
Charles W. Durham
Catherine and Terry Ferguson
First National Bank
Barbara and Bill Fitzgerald
Sue Fletcher
Ike and Roz Friedman
Family Foundation
Carmen and John Gottschalk
Elinor Greenfield
Debra and Bruce Grewcock
Sharon and William Griffin
Robert Grissom
Ramona and Deryl Hamann
Rhonda and Howard Hawks and
Tenaska, Inc.
HDR
Mary and Charles Heider
Dick Holland
Jeannette and Lawrence R. James
Lori and Rich Jaros
Helen and John Kenefick
Leona and Bill Kernen
Mary and Tom Kerr
Mary and Mickey Landen
Susan and Michael Lebens
Lincoln Financial Group
Ann Mactier
Mammel Foundation
Sally and Richard P. Marshall
Helen and Frank Matthews
Beverly and Harold Maurer
Cindy and Tom McGowan

MidAmerican Energy Holdings
 Company/Northern Natural Gas/
 CBSHOME Real Estate
 Dian Moore
 Terry L. Moore, Jr.
 R. F. Morrison
 Betsy and Chris Murphy
 Mutual of Omaha
 Nebraska Orthopaedic Hospital
 Diane and Ben Nelson
 Omaha Steaks
 Oriental Trading Company, Inc.
 Parker Family Foundation
 Peter Kiewit, Jr.
 Peter Kiewit Sons', Inc.
 Physicians Mutual Ins Co.
 Lenore Polack
 Jane and Ken Power
 Ivel and John Reed
 Marlene and J. Joe Ricketts
 Karen and Doug Riley
 Jane and Thompson Rogers
 Carol and Lee Rowe
 The David Scott Foundation
 Mary and Tony Seina
 Lin and Michael Simmonds
 Kimberly Querrey and Lou Simpson
 Lynette and Bill Singer
 Jean and C. Mickey Skinner
 Ann and Kenneth E. Stinson
 Robert H. Storz Foundation
 Phyllis and Del Toebben
 Dorothy and Stanley Truhlsen
 Union Pacific Corporation
 The Valmont Foundation
 Nancy and John Webster
 Kathryn Esping Woods and
 Rodney Woods
 Gail W. and Michael B. Yanney

Gifts to the Art Reference Library

Cash gifts for book purchases \$1,000 or more

Nancy and John Webster

Gifts of art-related books \$1,000 or more

John Fong
 Robert Getscher and Harry Wilkinson

Honorary and Memorial Gifts (Donors who made annual memorial/ honorary gifts to Joslyn totaling \$100 or more)

Naomi J. Banks
 In memory of Beatrice Schimmel
 Frances and Louis Blumkin
 In honor of Phillip Schrager
 In memory of Beatrice Schimmel
 Barbara and James Call
 In honor of Robert Bates
 In memory of Mary Holland
 Kate and N. (Sandy) Dodge, Jr.
 In memory of Beatrice Schimmel
 Ervin and Smith Advertising and
 Public Relations
 In memory of Beatrice Schimmel
 Sharon Marvin Griffin and
 William Griffin
 In memory of Beatrice Schimmel
 Harper Family Foundation
 In honor of Robert Bates
 Elizabeth and Frank Hilsabeck
 In memory of Beatrice Schimmel
 Mary Kaiman
 In memory of Nathan Kaiman
 Shirley Kulakofsky
 In memory of Beatrice Schimmel
 Mary and Clarence L. Landen, Jr.
 In memory of Beatrice Schimmel
 Susan and Michael Lebens
 In memory of Betty Cate
 John Mangimeli
 In memory of James Mangimeli
 Grace Mayer
 In honor of Jan and Richard Caulk
 Lynda and Sidney Mirvish
 In memory of Stella Feitelson
 Dian J. Moore
 In honor of Robert Bates
 In honor of Barbara and James Call
 Susan and David Morris
 In memory of Betty Cate
 Sharee C. and Murray H. Newman
 In memory of Beatrice Schimmel
 Nancy F. Noddle
 In memory of Beatrice Schimmel
 Eve and Frederick J. Simon
 In memory of Beatrice Schimmel
 Janet S. Strauss
 In memory of Beatrice Schimmel

Karen Todd
 In honor of Andrea Todd
 Nancy and John Webster
 In memory of Charles Kay, Sr.
 In honor of Michael B. Yanney

Gifts In-Kind

(Gifts valued at \$100 or more to Joslyn or one of its support groups)

AAA Rents
 Adam Whitney Gallery
 American Gramophone
 Ameristar Casino
 Blooms in Rockbrook Village
 Blue Cross Blue Shield
 Booz Allen Hamilton Inc.
 Boulevard Brewing Company
 Christie's
 Coca Cola
 ConAgra Foods Company
 Elman & Co.
 Emspace Group
 Godfather's Pizza
 Images of Nature
 Jelescos
 KETV Channel 7
 Midwest Airlines
 David Murphy
 Old Market Habitat
 Omaha Steaks International
 One-of-a-Kind by Melissa Marvin
 Oriental Trading Company
 Karen Sundell
 U.S. Cellular
 Whole Foods Market

Passport Partners (\$100,000)

Passport Partners is a cultural partnership between The Nebraska Medical Center, the University of Nebraska Medical Center, UNMC Physicians, and Joslyn Art Museum with the mission to offer a variety of art-focused opportunities, both at Joslyn and at the medical center campus, to over 10,000 employees and students.

The Nebraska Medical Center
 University of Nebraska Medical Center
 UNMC Physicians

Businesses and Institutions Involved in Membership Campaigns

Participating with Financial Support

ACI Worldwide, Inc.
 Alegent Health Mercy Hospital
 AON Risk Services, Inc.
 Baird Holm Law Firm
 Barnhart Press
 Bellevue University
 Blue Cross Blue Shield
 Booz Allen Hamilton
 Borhseim's Fine Jewelry and Gifts
 Burlington Capital Group
 DLR Group, Inc.
 Energy Systems Company
 First Data Resources
 First Westroads Bank
 HDR, Inc.
 IBM Corporation
 John Day Company
 Kutak Rock, LLP
 Leo A. Daly Company
 Lieben, Whitted, Houghton,
 Slowiaczek, and Cavanagh, PC, LLO
 Lincoln Financial Group
 Metropolitan Utilities District
 MidAmerican Energy Holdings Company
 Mutual of Omaha
 No Frills Supermarkets
 Northern Border Partners, LP
 Northern Natural Gas
 Omaha Steaks
 Omaha Public Power District
 Peter Kiewit Sons', Inc.
 Redstone Communications
 The Scoular Company
 SilverStone Group
 Union Pacific Foundation
 U.S. Bank of Nebraska
 Valmont Industries, Inc.
 Wells Fargo

Participating

Bank of the West
 City of Omaha
 Creighton University
 CSG Systems
 Deloitte and Touche
 Farmers National Company
 Gorges Volvo
 Grace/Mayer Insurance Agency
 Holland Basham Architects
 Infocrossing
 Koley Jessen, PC
 Lamson, Dugan, and Murray, LLP
 McCarthy Group, Inc.
 Metropolitan Community College
 Mosaic
 Mutual of Omaha
 Northrop Grumman Mission Systems
 Omaha Public Schools
 Omaha World-Herald
 Physicians Mutual Insurance Company
 Tenaska
 THT Designs
 Union Pacific
 University of Nebraska at Omaha
 Uta Halee Girls Village
 Woodman of the World Life
 Insurance Society



BODMER SOCIETY AND CONTEMPORARY ART SOCIETY MEMBERS

Bodmer Society

(Support group for the Margre H. Durham Center for Western Studies)

Founding Members of the Bodmer Society are denoted with an asterisk ().*

Kathleen and Robert H. Ahmanson*
 Marian and Harold W. Andersen*
 Jo Anderson
 Judy and Robert Bates*
 Cynthia and Mogens Bay*
 Patricia and Richard Bell
 Robert Billingsley
 Lynne and John Boyer*
 Eileen and Henry G. Brown
 Susan A. Buffett
 Barbara and James Call*
 Syd L. Cate*
 Carol and Brad Chapman
 Jane and LeRoy Crosby
 Pamela and James Q. Crowe*
 Mary and F. Joseph Daugherty*
 Robert B. Daugherty*
 Dawn and Sid Dinsdale
 Beverly and William L. Donaldson
 Charles W. Durham*
 Sue Fletcher
 Katherine and William Foxley*
 Kathy and Wayne Gary Gates
 John Golden
 Carmen and John Gottschalk*
 James William Guercio
 Judy and Terry Haney
 Rhonda and Howard Hawks*
 Mary and Charles Heider*
 Richard D. Holland*
 Anda Howe
 Carole and Robert Julian*
 Hani and John Kenefick*
 Leona and Bill Kernen*
 Linda L. Klaasmeyer
 Gail and Harry Koch*
 Mary and Clarence L. Landen
 Kim and Bruce Lauritzen
 Susan and Michael Lebens
 Mary and Dennis Lundgren*
 Sally and Graham Lusk
 Joyce and Carl Mammel*
 Helen and Frank Matthews*
 Beverly and Harold Maurer
 Nancy and Michael McCarthy
 Cindy and Thomas F. McGowan*
 Carolyn Meissner
 Dian J. Moore*
 Roger F. Morrison
 Laurel and David Murphy
 Ann and A. Ralph Navaro
 Shirley and Daniel Neary
 Anne and John Nelson
 Aldine Nordgren

Lenore Polack
 Marlene and J. Joe Ricketts
 Karen and Doug Riley
 Anne and David A. Rismiller*
 Jane and Thompson H. Rogers
 John Schlegel, S.J.
 Lori and W. David Scott
 Suzanne and Walter Scott*
 Eve and Fred Simon*
 Jean and Mickey Skinner*
 Peggy and David Sokol*
 Ann and Kenneth E. Stinson*
 Janet S. Strauss*
 Phyllis and Del Toebben
 Dorothy and Stanley Truhlsen*
 Tricia and Mark Weber
 Nancy and John Webster*
 Gail and Michael Yanney*
 Shirley and Jim Young

National Chapter Members

Chris Arader
 W. Graham Arader, III
 Carol and Jack Asher
 Fran and Lenox Baker, Jr.
 Frank Benevento
 Ann and Steve Berzin
 Terri and Dennis Bovin
 Wendy and Henry Breck
 James Brodell
 Peter DeSorcy
 Douglas Eby
 Lynn and Wesley Edens
 Michael Engl
 Susan and Steve Felker
 Michael Frost

Patrick Gerschel
 Diane and Jay Goldsmith
 Victoria and Mark Graham
 Albert Gunther
 Paul Tudor Jones, II
 Donna Pearson Josey
 Mark Kalimian
 Marie and James Kelly
 Richard Lampert
 Betty and Larry Larsen
 Marc Letellier
 Orrin Lippoff
 Alex Ludwig
 Jill Matichak
 Gian Matteo Lo Faro
 Aubrey Kerr McClendon
 Jim Parks
 Tim Peterson
 Cynthia Phipps
 John Ross
 Richard Sandhaus
 Richard Sands
 John Scherlis
 Joan and Michael Schneeweiss
 Jeffrey Siegal
 Dwight Sippelle
 Edgar O. Smith
 Lawrence Solomon
 Claire and Stephen Sordoni
 Karen and Howard Spey
 Jonathan Stern
 Elisabeth and Karl Swann
 Samuel Vickers
 Michael White
 Suellen and John Wilson
 Mark Zaplin



Bodmer Society members Harold W. Andersen (left), Governor Emeritus on Joslyn's Board, and his wife, Joslyn Board member Marian Andersen (right), with renowned Western Art collector Bill Foxley and Joslyn Director J. Brooks Joyner (far right), admire a painting by Charles M. Russell, on view in the exhibition *Legends of the West: The Foxley Collection*, at the Bodmer Society Rendezvous Dinner, October 3

Contemporary Art Society

(Special interest group directly engaged with contemporary art)

Kathy and Ross Bellinghiere
 Frances and Louis Blumkin
 Myriel Boes
 Kim and Randy Brown
 Anne and Stephen Bruckner
 Sandi L. and William Bruns
 Eddith Buis
 Rkachea and Bruce Carpenter
 Joan Desens and Simon Carr-Ellison
 Sylvia B. Cohn
 Rex Daugherty
 Karen and Robert Duncan
 Ruth and Joe A. Erman
 Jill and Mike Erman
 Estelle Faier
 Larry Ferguson
 Catherine and Terrence Ferguson
 Sara Foxley
 Norma and James Fuller
 Carol Gendler
 Carmen and John Gottschalk
 Carol and Howard Hahn
 Mary and Charles Heider
 Shari Hofschire
 Richard D. Holland
 Angela and Stanley J. How
 Lawrence R. James, II
 Frances and Richard Juro
 Joanie and Martin J. Lehr
 Dianne and Allan Lozier
 Mary and John Mitchell
 Donna Menolascino and Karl Momsen
 Maggie and Robert Mundy
 Shirley and Daniel Neary
 Sharee and Murray Newman
 Ronald J. Palagi
 Lenore Polack
 Polina Poluektova
 Mary Jane (Kop) Ramsey
 Karen and Doug Riley
 Barbara Rips
 Robert Rogers
 Jane and Thompson H. Rogers
 Jan Buckingham and Lauren M. Ronald
 Suzanne and Walter Scott
 Mary and Kurt Shafer
 Stacy and Bruce A. Simon
 Eve and Fred Simon
 Betiana and Todd Simon
 Heidi and Mark Singer
 Annette and Paul Smith
 Ann and Kenneth E. Stinson



Dr. David Carrier (seated), Champney Family Professor at Case Western Reserve University and Cleveland Institute of Art; John Wilson, Ph.D., Joslyn Director of Curatorial Affairs; and Contemporary Art Society (CAS) member Todd Simon (right) at a CAS event featuring Dr. Carrier's book Museum Skepticism: A History of the Display of Art in Public Galleries, June 13

Marilyn Offutt Sullivan and Richard Sullivan

Monte and Duane Thompson
 Patrick H. Tyrance, Jr.
 Gail and Irving Veitzer
 Joodi and Norman Veitzer
 Patricia and Judd Wagner
 Richard Weisman
 Anne M. and Arnold D. Weitz
 Donna and Perry T. Williams
 Philip J. Willson
 Mary and John Wilson
 Joan Gibson and Donald Wurster

PATRON MEMBERS

Patron Benefactor

(\$10,000 and above)

Marian and Harold W. Andersen
Energy Systems Company
Kim and Bruce Lauritzen
Cindy and Thomas F. McGowan
Karen and Doug Riley
Jane and Thompson H. Rogers

Patron Governor

(\$5,000 to \$9,999)

Judy and Jack W. Baker
Judy and Robert Bates
Susan A. Buffett
Sylvia B. Cohn
Charles W. Durham
Kathy and Wayne Gary Gates
Carmen and John Gottschalk
Rhonda and Howard Hawks
Wende Lindsey-Kotouc and
John Kotouc
Kutak Rock LLP
Helen and Frank Matthews
Shirley and Daniel Neary
Suzanne and Walter Scott
Lin and Michael Simmonds
Eve and Fred Simon
Peggy and David Sokol
Ann and Kenneth E. Stinson
Valmont Industries, Inc.
Nancy and John Webster
Barbara and Wallace R. Weitz
Mary and John Wilson
Shirley and Jim Young

Patron Director

(\$2,500 to \$4,999)

Cynthia and Mogens Bay
Ann and James Bonham
Carol and Brad Chapman
Mona and Marshall E. Faith
Catherine and Terry Ferguson
Tricia and Steve Frary
Marianne and Fred Hawkins, Jr.
Mary and Charles Heider
Richard D. Holland
Louise and J. Brooks Joyner
Mary and Clarence L. Landen
Elizabeth D. Lauritzen
Dianne and Allan Lozier
Joyce and Carl Mammel
Sharee and Murray Newman
Lenore Polack
Julie and John Schroeder
Janet S. Strauss
Kathy Esping Woods and
Rodney Woods

Patron Curator

(\$1,000 to \$2,499)

AAA Enterprises, Inc.
Marcia and Frederick Backer
Dorothy M. Bennett
Frances and Louis Blumkin
Eileen and Henry G. Brown
Barbara and James Call
Elizabeth and John Carroll
Syd L. Cate
Pamela and James Q. Crowe
Mary and F. Joseph Daugherty
Robert B. Daugherty
Ruth and Joe A. Erman
Eve Fisher
Barbara and Bill Fitzgerald
Roz Friedman
Nancy and Thomas Gallagher
Elinor N. Greenfield
Debra and Bruce Grewcock
Janis and John Haggstrom
Melissa Marvin and Geoffrey Hartig
Cynthia and Herbert Hartman, Jr.
Teresa and Fred Hunzeker
John J. Jelinek
Donna and Matthew Johnson
Frances and Richard Juro
Rae and Thomas Keogh
Myrna and Robert Krohn
Eleanor Malot
Michele Marsh and John Terry
Beverly and Harold Maurer
Sharon and Richard Miles
Roberta and Norman Miller
The Miller Foundation, Inc.
Lyra Ann Monasee
Diane and Ben Nelson
Janis R. Nelson
Anne and John P. Nelson
Nancy F. Noddle
Pearson Art Foundation
Sandra and James Reding
Donna and Edward Robinson, Jr.
Carol and W. Lee Rowe
Cynthia and Charles Schneider
Ruth Lind and J. William Scott
Mary and Tony Seina
Margaret Shearer
Phyllis A. Sherman
Carol and Drexel Sibbernson, Jr.
Stacy and Bruce A. Simon
Betiana and Todd Simon
Lynette and William Singer
Jean and Mickey Skinner
Marilyn Offutt Sullivan and
Richard Sullivan
Phyllis and Del Toebben

Dorothy and Stanley Truhlsen
Dorothy and Allan Tubach
Judith Vann
Diana and Dennis P. Walker
Philip J. Willson

Patron Collector

(\$500 to \$999)

Nancy and David Abboud
Diane and Robert M. Ames
Phyllis and Harvey Aronson
Nancy Askew
Anne Stuart Batchelder
Janice and Robert Batt
Sally G. and Frederick M. Bekins
Mary Ann Belford
C. R. (Bob) Bell
Joanne and Robert Berkshire
Leslie Berry
Sharon and Randell Blackburn
Barbara Bock-Mavis
Sylvia and Gary Bohn
Sally and Edson Bridges
Mark J. Brodkey
Mary Clarkson and Robert Broom
Jean and Bruce Buehler
Susan Butler
Larry Carlson
Jan and Richard Caulk
Phyllis and James Chapin
Carole L. Christ
Joan and Donald Cimpl
Mary Jo and Richard M. Coffey
Laura and James Commers
Charlotte and William Conner
Carol and Benton Copple
Mary and Hal Daub
Elizabeth Davidson and Clark Hodder
Colleen and Roger Dilley
Lynn Dinsdale-Marchese
Anne and James Dolan
Rosemary and Bernard Duhaime
Debby Durham
Lynette and Marvin Dvorak
Bobbi and John Dyer
Paula and James Ellis
Jane and John Ellsworth
Darlynn and Tom Fellman
Terry and Randolph Ferlic
Debbie and Rex Fisher
Pam and William Fleming
Cindy and Albert Frank
Nancy and David Friedland
Thama Lee and Willard Friedman
Marlen Frost
Edith A. Gallagher
Marjorie and Dan Gardner
Carol and Michael Geary

Karen and Thomas D. Gensler
 Kay Lynn and John C. Goldner
 Shirley and Leonard Goldstein
 Beverly and Randall Greer
 Judith and John Griffiths
 Barbara and David Haggart
 Ramona and Deryl F. Hamann
 Ibby B. and John W. Hancock
 Judy and Terry Haney
 Elinor and Robert Hansen
 Karen and Kim Hawkins
 Julie and David Hefflinger
 Marilyn and William Hetzler
 Bonnie Hickey
 Anne Hubbard
 Claire Hubbard
 Jeannette and Lawrence R. James
 Lawrence R. James, II
 Mary and Thomas C. Jetton
 Gaile and Owen Johnson
 Noreen and William Johnson
 Esther and Carter Jones
 Richard A. Jourdan
 Connie and Patrick Jung
 Ruth and James H. Keene
 Helen and Richard Kelley
 Teresa and Kirk Kellner
 Karen and Howard Kennedy
 Linda and Donald Kerr
 Maxine and Joe Kirshenbaum
 Kathleen and William Kizer
 Steph and Jack Koraleski
 Earl R. Kreins
 Jackie and Terry Kroeger
 Diane and James Landen
 Deb and Al Larsen
 Marian H. Leary
 Grace and Earl Leinart
 Bobette and Jay Lerner
 Deana and Michael Liddy
 Jennifer Toebben and Chris Link
 Ann Mactier
 Tove and Thomas L. Manuel
 Dara Spivack and Robert McAnally
 Mia Nagy and Tom McGinn
 Dorothy and Daniel McKinney
 Suzanne and Joseph McNamara
 Susan and Steven McWhorter
 Renee and Bert Mehrer
 Metropolitan Community College
 Lois and Myron Milder
 Dian J. Moore
 Tania and Terry Moore
 Michelle and Mario Mota
 Donna and Ralph Nelson, Jr.
 Carol and Charles Novich
 Jan Nurnberger
 Jean and William O'Connor

Dolores Owen
 Janet and Stephen Papenfuss
 Mary and Richard J. Parrish
 Barbara and Donald Pavelka
 Catherine and Troy Perry
 Patricia and Gerald Pfeffer
 Patricia J. and James Phalen
 Liza and Jerry Porter
 Rita Price
 Jo and Rick A. Prusha
 Kelly Karl Ptacek and Patrick Ptacek
 Kathleen and John Ransom
 Virginia and Martin Reagan
 Ivel and John Reed
 Betsy J. and Robert A. Reed
 Jan Buckingham and Lauren M. Ronald
 Carol and G. Richard Russell
 Constance Ryan
 Rebecca and Kirk Samuelson
 Frank Schepers
 Molly and Tobin Schropp
 Elizebeth Murphy and
 Ray Schueneman
 Amy Scott
 Anne and Alan Simon
 Klayton Killion and Robert Siniard
 L. Harriet Singer
 Teddi and Timothy L. Slattery
 Ellen and Richard Slosburg
 Stanley J. Slosburg
 Smith Bourne & Associates, Inc.
 Pamela and Jim Specht
 Elaine Spire

Thomas D. Thalken
 Jann and Lawrence B. Thomas
 Margo Tucker and E.J. Tucker
 Duane Warden
 Anne Thorne Weaver
 Pam and Michael C. Weekly
 Gail Werner-Robertson
 Judy and Gale Wickersham
 Cynthia and David Wiesman
 Judy and James H. Wigton
 Mary and John Wilson, II
 Joan Gibson and Donald Wurster

Young Art Patrons (\$150 Supporting Members)

Mimi and Todd Boswell
 Amy and Stuart Chittenden
 Arnel B. Citrus
 Mark Guilliat
 Jennifer Magilton-Hinrichs and
 Mark Hinrichs
 Emily and Michael Jung
 Polina Poluektova
 Dana Siebler and Mark Sidwell
 Jake D. Slosburg
 Candace J. Tielebein
 Bill Wardell
 Sabrina and Zachary Weiss
 Ryan Zabrowski



Young Art Patrons (YAP) committee member Kenny Rocker (left) and YAP member Joe Downs (right) with Alexander Nyerges, exhibition curator and then Director and CEO of The Dayton Art Institute, at a special YAP gallery event for the exhibition Edward Weston: A Photographer's Love of Life, June 22

CONTRIBUTOR MEMBERS

Contributor Members — Sustaining (\$250 to \$499)

D. R. and K. W. Bankhead
 Jamie and Tom Barker
 Rick Beard
 Liz Spivey and Dave Bergin
 Chris L. and Ronald Blumkin
 Mary Clarkson and Robert Broom
 Karen and Doug Brouillette
 Scot Caldwell
 Janna and Grant Calkins
 Kate A. and John J. Cavanaugh
 Diane and Lawrence Cochran
 Aurel Couch
 Rosemary G. Daly
 Janet and Fred Davis
 Janelle F. and Leon F. Davis
 Dominick DiMaio
 Carol Jorde Domina and
 David Domina
 Lou and Scott Dye
 Mary J. and William S. Ellis
 Deborah and Kenneth Elson
 Joan Squires and Thomas Fay
 Janet L. and Thomas P. Ferlic
 Gail and Bruce Frasier
 Frances H. and Ray D. Gaines
 Joanne S. and Philip P. Gilmore
 Paula K. and Gary Glissman
 Belinda B. and Carl B. Greiner
 Adele A. and Ted Hazer
 Carr E. Heaney, Jr.
 Keith Hentzen
 Bruce Heyne
 Barbara and Paul E. Hodgson
 M. S. and Catherine J. Hohman
 Mary L. and Thomas H. Holley
 Carolie Hunting
 Carolyn and George M. Ireland
 Jean and David Jaskierny
 Mary R. and Paul C. Jessen
 Phyllis and John Jeter
 Dale E. Johnson
 Judith and Joseph G. Johnston
 Fanny S. Jones
 Elizabeth Scott Karpf
 Ellen C. and Bruce C. Karsk
 Renee and John E. Kizer
 Richard F. Klaas
 Susan and Tom Knight
 Victoria and David A. Krecek
 Janet and C. Rex Latta
 Barbara and Kirk C. Lewis
 Sina J. Linman
 Trudy and Larry Lundquist
 Michael Luther
 Sally L. and Michael D. Mann

Joan V. and John J. Matoole
 Carol B. and Harley McDonald
 Rozlyn and Michael Merrick
 Robin Behlers and Paul Mileris
 Lindsey Miller-Lerman
 Katherine and Tom S. Miya
 Mary and John W. Monson
 Marilyn and Darrel G. Moreland
 James Morgan
 Dorothy and William E. Morrow, Jr.
 Rozanne and Duncan Murphy
 Gayle and Timothy Nance
 Andrea M. and W. Don Nelson
 Christine W. and David P. Nikunen
 Mary E. Helms and Kenneth R. Olson
 Catherine and Richard Pedersen
 Jane and Scott H. Peters
 Cassandra J. and Gary A. Pietrok
 Winifred and Lewis Pinch
 Betty Foster and Chuck Powell
 Linda and Bill Pratt
 Teri and Ronald Quinn
 Beatrice Reimers-McLaughlin
 Jan Reynolds
 Susanne Shore and Pete Ricketts
 Jane and William Roccaforte
 Rose Marie and Harold Dean Sapp
 Shelly and Stanley H. Schack
 Anne E. Scheerer
 Joanne and James R. Scott-Miller
 Diane and Lawrence F. Shackman
 Ann and Frank C. Sidles
 Mary McNamee and Kieth Simmons
 Patty Skwarek
 Martha and D. David Slosburg
 Jeannette A. and H. Wayne Smith
 Gregory H. Sovey
 Ann L. and Gene Spence
 Betsy J. and Lynn A. Stephenson
 Ingrid and Del Stites
 Nancy H. Sunderland
 Patricia and Dale TeKolste
 Leslie and Daniel Thiele
 Nancy and Alan Thorson
 Jean M. and Richard B. Tobin
 Blair Vogel
 Linda and Robert S. Walker, Jr.
 Linda R. and Ronald L. Wax
 Sue L. and Tom Weidner
 Patti Jo and Dennis Weiss
 J. Todd White
 Nancy L. and Philip M. Wolf
 Irene A. Zimmerman
 Judy Zweiback
 Amy and Timothy Zweiback

Contributor Members — Associate (\$100 to \$249)

Jennifer A. and Steve Ackerman
 Charles Addy
 Steve Agosta
 Margaret and John Allington
 Jane G. Alseth
 Beth and Jeff Andersen
 Linda Matson Andersen
 Lou Andersen
 Martha M. Andersen
 Carol A. Anderson
 Carolyn Owen Anderson
 Nancy and David Anderson
 Vickey Anderson
 Theresa and Charles E. Andrews
 Barbara and Jack Angus
 Zach Atchley
 Judith and John Atkins
 Toni and James A. Bac
 Gail and Doug Backer
 Emily R. Baker
 Christine A. Webster and James Balters
 Mary P. and Jack C. Barnhart
 Rose Marie and George J. Basque
 Terry Baxter
 Weenonah L. and Curtis K. Bayer
 Clare and Duane Baylor
 Jean and Steven Beck
 Nancy and Steven Beckwith
 Nancy N. and George J. Behringer
 Marilyn Beig
 Nancy and Jack Belck
 Thomas M. Belford
 Kathryn and James Bellman
 Gerry Sullivan and Robert Benzel
 Mary and Tom Bernstein
 Mary Wampler and Philip J. Bierman
 Anne D. and Robert T. Binhammer
 Pam and Dennis Bintner
 Gary Birge
 Lisa A. Bladt
 Jerry Bland
 Barbara Ann and Frank M. Blank
 Judy and Frank Blazek
 Sharon L. and Robert Bloechle
 Barbara Bock-Mavis
 Judith Boelts
 Steve Boes
 Kathleen and Joseph R. Bohacek
 Bonnie and Allan Boone
 Dorothy and David H. Bowman, Jr.
 Esther and Dan Brabec
 Meroe Brady
 Marti and Ken Briney
 Elizabeth Owens and William Brock
 Tina and Dale A. Broekemeier
 Nancy and Dave E. Brown

James R. Brown
 Kim-Lien Dinh and
 James D. Browning
 Barbara and Gerald C. Brundo
 Susan J. Boust and George K. Burcum
 Margaret A. and Robert F. Burns
 Mary K. and James R. Campbell
 Peter Canaday
 James C. Carnicom
 Anne D. and James A. Carroll
 Marilyn and H. Robert Cassling
 David Catalan
 Susan and Jim Catlin
 John F. Cazahous, Jr.
 Joyce and Elisabeth Chandler
 Susan C. and Bob Chenoweth
 Val Chickinelli
 Gretchen and Fred Christensen
 C. Ann and Russell A. Clark
 Annette and Travis Clark
 Evelyn and Carl Comte
 Susan E. Conine
 Terrence Connelly
 Cora and Maurice Conner
 Mary (Peg) E. and Gary L. Crouch
 Jacquelyn and Herbert Crowley
 Marianne and Tom Culhane
 Robert H. Culver
 E. F. Curtiss
 Teri S. and Mark L. D'Agostino
 Sharon and Collin D'Silva
 Kathleen Dankert
 Wayne Daugherty
 Mary S. and Kurt A. Davey
 Marcia Codes-Davies and
 Michael Davies
 Rose Marie and Bill E. Davis
 Cornelia and John B. Davis
 Jeri and Neal Davis
 Jean G. Day
 Norma J. Deeb
 Maureen E. and Michael J. Delich
 Geraldine C. and Harold T. Dibelka
 Sara Dingman
 Gloria and Roy Dinsdale
 Kim and Tom Dinsdale
 Linda A. Dobry
 Grace-Ann and E. David Dolak
 Barbara J. Donovan
 Karen and Patrick Drickey
 Gayle and Sarge Dubinsky
 Janice R. and Frank J. Duffy
 Catherine and C. D. Duran
 Michelle and Gregory Eakins
 Claire W. Eason
 Catherine Eberle
 Irene and Gary G. Ecklund
 Barbara J. and Herbert Egerer
 Mary Kay Eggers



Guests fill the exhibition galleries to view *The Saint John's Bible* during the Members-only Opening for the exhibition, attended by more than 1,700 members (a record), January 21

Marnie and R. J. Ellingson
 Mary and Herbert A. Engdahl
 Cathy and Todd Engle
 Janice and Steve Erwin
 Janet H. and Carl B. Eskridge
 Bernadette and Paul Esposito
 Barbara A. Fanning
 Joan B. and John J. Ferguson
 Marianne K. Festersen
 Ellen and Leonard L. Finnegan, Jr.
 Therese and Tim Fitzgibbons
 Yoshiko and Edward J. Fitzpatrick
 Thomas Foley
 Diane and Jere Fonda
 Sandra and Robert J. Fonda
 Barbara J. Ford
 Rebecca Ford
 Marilyn and Don Forke
 Robert M. Foster
 Muriel Frank
 Judy Franksen
 Nev and Gordon E. Fredrickson
 Julie and Lance Fritz
 Dominique Frost
 Kimberly and Florian Fuerstenau
 John Gallagher
 Marcia Gallner
 Margie Garcia and Jorge Garcia-Padial
 Karen and Bruce Garver
 Dana and Steve Gehring
 Helen S. and Louis G. Gerdes
 Sharon and Frank A. Giitter
 Sarah F. and William F. Ginn
 Polly and Joe Goecke
 Whitney and David Goldner
 Barbara and Gary Goldstein

Barbara Goodrich
 Linda and Jerry Gordman
 Margaret J. and John L. Gordon
 Wanda and J. Michael Gottschalk
 Lucy Beale-Graeme and R. B. Graeme
 Walter B. Graham
 Rosalie P. and Charles M. Graz
 Nina and John J. Griffin
 Virginia and Robert L. Grissom
 Doris Grof
 Katie and Joel Guenther
 Joan Hackett
 Jo Ann Hajek
 Marie Larchick and Arthur Haney
 Grace E. Hansen
 Mildred E. and Malvin L. Hansen
 Kerry Winterer and Norma Hansen
 Alice and Jerry D. Hanson
 Deborah and Michael Hargrave
 Jacquelyn and Roger K. Harned
 Carolyn and Jeff Harrington
 Mr. and Mrs. Darrauld B. Harsh
 Jody Harvey
 Gregory A. Havelka
 Mary Jo Havliceck
 Susan and Michael R. Hawkins
 Barbara J. and Douglas S. Heikel
 Gayle and Thomas Heldridge
 Joan C. and Peter W. Hill
 Rose M. Hill
 Norma J. Hilt
 Karel and Charles Hinkle
 Kenneth Hladek
 Janie C. and Harry A. Hoch, Jr.
 Kristen and Gary Hoffman
 Mary Anne and David E. Hoover

Maxine Horning
 Elizabeth and Donald Hosford, Jr.
 Anne Houlihan
 Kayla and Robert Howard
 Annette and Steven Huff
 Ann B. and Gerald L. Hug
 Jean and Nadine Hunter
 Carla and Thomas J. Imray
 Maria C. and Dean G. Jacobsen
 Jayne L. Timmerman and
 Daniel L. Jaksich
 Teresa Meyer and Jim Jarazbek
 Eva M. and Burton D. Jay
 Jelecoss
 Deby Johnson
 Gilbert D. Johnson
 Patricia and Gordon F. Johnson
 Mary K. and Robert D. Johnson
 Cheri Jones
 Elizabeth and Jerry Jones
 Elizabeth J. and Kevin M. Joyce
 Ronald J. Kafka
 Robin and Henry Kammandel
 Beverley and F. William Karrer
 Renee and Sandford Kasner
 Patricia D. and Gene F. Kathol
 Audrey and Richard F. Kauders
 Shari and Bill A. Kellstrom
 Jan and Victor Kensler
 Dale Kent
 Lydia J. Caldeira and Stephen E. Kight
 Ann Kineen
 Geraldine B. and Jack B. King
 Margaret A. Kirkeby
 Mike Klug
 Kelly Knepfel
 Glenda K. Knowles
 Jerry Kooiker
 Jean and Donald H. Korff
 Joan W. Kriegler
 Mary Ellen and Charles Krobot
 Victoria and Kenneth Kroeker
 Janet A. and H. Frederick Kuehl
 Shirley Kulakofsky
 Patty and David Kunsemiller
 Carol A. and Michael J. LaCroix
 Colleen and Michael Langenfeld
 Lois J. Inskeep and Lorinda Langner
 Clark Lauritzen
 Anna Liza and Pierre J. Lavedan
 Norma and Richard LeClerc
 Kathryn and Jack Lewis
 Anne Hayes and Martin Lewis
 Rochelle Lewis
 Sandra Neely and Patrick Lhermitte
 Anne C. and T. Geoffrey Lieben
 Tom D. Liefer
 Erin and Michael Limas

Sheila and James Lincoln
 Katie and James Linder
 Lora Damme and Jay Longinaker
 Patricia and Charles Lontor
 Marjorie Benson Loring
 Faith L. Louis
 Maxine and Armel MacDonald
 Debora and John Mackiel
 Jodie and William L. Mackintosh
 J. Terry MacNamara
 Heidi and Tom Macy
 Rob Madden
 Mary and Joseph Magner
 Michael Mahoney
 Sally G. and Edward M. Malashock
 William March
 Sally S. and Richard P. Marshall
 Robert J. Martin
 Caryl and Jose Martinez
 Barbara L. Maus
 Mary M. and Charles F. Maxwell, Jr.
 Catherine and Marcue Maydew
 Jazmyn McDonald
 JoAnn McDowell
 Ann and James E. McGill
 Joan and Earl J. McLean
 Cathy and Patrick McManus
 Grace L. and Cynthia Anne McMillan
 Donna and Larry Melichar
 Kurtis Meyer
 Patricia A. and Peter W. Miller
 Daisy and J. Gates Minnick
 Regina and John Minton
 Mary R. and James J. Montequin
 Marilyn and David Moore
 Maria and James H. Moore, Jr.
 Nancy and Michael Moran
 Cynthia A. Zumuhlen and
 Garet J. Moravec
 Arlis and Philip E. Morrison
 Jolene M. and Bruce A. Moseman
 Nancy Morris and Joseph Muller
 Joani and Michael G. Mullin
 Elvira Garcia and Gordon Mundell
 Bob Murphy
 Beverly and Robert J. Murray
 Laura-Lee and Howard W. Needelman
 Kathy W. and George E. Nelson
 Amber Neubert
 Mary and Kevin D. Nohner
 Sandra L. Nolle
 Victoria L. and Robert B. Northrup
 Renee and Richard O'Brien
 Kay and Young P. Oliver
 Lynette S. and Matt R. Olsen
 Connie and H. Don Osborne
 Dorothy Otis
 Harriett and William L. Otis

Russell W. Palmer
 Jennifer and Thomas Pansing, Jr.
 Ann and Raymond Pape
 Susan Seaton and John G. Papproth
 Frances and John Parrott III
 Elna W. and Robert E. Peirce
 Letitia and John W. Pemberton
 Bradley and Lynn Perry
 Jean Ann Ballinger and
 Ward D. Peters
 Allison and Gary Petersen
 L. Victoria Peterson
 Joy A. Pillard
 Eleanor M. Plumb
 Bev and Kennard Pohlman
 Karen F. and Oliver B. Pollak
 Vicki Pratt
 Sandra and Jane Price
 Sharon and Frank Prucka
 Prudential Foundation
 Marjorie A. Quinlan
 Laura A. Rachwalik
 Sara and Gary W. Radil
 Andrew Rasmussen
 Betty C. and Hans Rath
 Izen I. and Neal S. Ratzlaff
 Helen C. and Barney B. Rees
 Steven K. Reida
 Bruce Reynolds
 Katherine Rhea
 Mary and Gerald E. Ries
 Silvia and Larry E. Roffman
 Robert D. Rogers
 Jane and Carl H. Rohman
 Debra J. Romberger
 Fran and J. Emmet Root
 Nancy A. and Jim E. Rosenthal
 Lois and Ronald W. Roskens
 Richard E. Rossi
 Kathi and Louis J. Rotella, Jr.
 Phyllis Kingery-Ruff and
 Clifford R. Ruff
 Julia and Joel Russell
 Patricia and Joe Samson
 Helen and Stephen Sawtell
 J. G. Schaaf
 Nola and David Schettler
 Jeri and William Schlueter
 Rick W. Schreiber
 Nancy and Phillip Schroeder
 Alcyone M. Scott
 Dianne M. and John A. Scott
 Willa and Lee D. Seemann
 Kathleen Tighe-Seidel and
 Thomas W. Seidel
 Cindy and Wayne Sensor
 Greg Severson
 Anne and Bruce Shackman

Anne Shaughnessy
 Fran and Neil Shaver
 James T. Shaw
 Usha and Dan Sherman
 Frances C. and Joseph H. Sherrard
 Laura and William Shiffermiller
 Kay Shilling
 Nancy and Richard Shugrue
 Lonnie E. Shumate, Jr.
 Linda C. and Robert R. Siffring
 Steven Silver
 F. Miles Skultety
 Dorothy D. and Greg T. Sloma
 Kathryn and Douglas Smith
 Patricia and Sanford Smith
 Whit Smith
 Pam J. and Jim F. Sorrell
 Shirley A. and Michael F. Sorrell
 Connie and Richard H. Spellman
 Denese H. and Thomas D. Stalnaker
 Pam and Ed Stanek
 Dorothy I. and David Stern
 Peg and Dennis Stessman
 Jean and Bill Stillmock
 Julie and Morgan Strattan
 Jane Carnazzo and Robert Stutzman
 Donna D. Sulskis
 Robert and Karen Sundell
 Charles Szmrecsanyi
 Jane and Michael Tan Creti
 Elizabeth and Thomas Tape
 Sherry A. and Jeffrey Taxman
 Ann M. and Jon G. Taylor
 Jean W. and Robert Taylor
 Vance F. Taylor
 Jan Thelen
 Nicole B. Theophilus
 Carol and Gary Thompson
 Karen and Gary N. Thompson
 Linda and Ronald G. Thompson
 Jean O. and Millard R. Thurmond
 Ann E. and Andy Titus
 Kay B. and Charles R. Tomek
 Jane and Thomas Tonniges
 Kathy L. and Robert C. Townsend
 Michael Trautschold
 Irene and Donald Treaster
 Suz and Steve Trusty
 Dorothy and Dean J. Tuma
 Carol B. and David U. Van Metre
 Denise Kolbet and Michelle
 Vanderwoude
 Nancy J. and Kevin D. Vaughan
 Barbara J. Velinsky
 Carl Vieregger
 Mr. and Mrs. John A. Vifquain
 Diane Riibe-Virant and Ed C. Virant
 Sandra and Thomas VonRiesen



(Left to right) Artists Thomas Mangelsen and Howard
 Buffett with Joslyn Director J. Brooks Joyner at the Close
 Proximity exhibition event, May 4

Barbara Waldie
 Virginia and Thomas Walsh
 Donna Walter
 Eugene Waltke
 Vicki and Dean Wampler
 Colleen and Edward Warin
 Bette L. Weekly
 Kenneth P. Weiner
 Sharon Welna
 Madeline and Art West
 Margaret Block and Larry West
 Marilyn White
 Donna M. and Lowell R. Wilhite
 Lori L. and Stephen H. Williams
 Sandra and Daniel R. Wilson
 Julie and Mark Wilson
 Mary Beth and James P. Winner
 Barbara and Gary D. Woods
 Marek A. Wozniak
 Betty and Lloyd Zachariae
 Gloria J. Zakaras
 Robert Zimmerman
 Charlotte and Morley Zipursky
 Evelyn Zysman

Joslyn Art Museum extends a sincere
 apology to anyone whose name may have
 been inadvertently omitted from the
 Volunteers, Donors, Collectors' Groups,
 and Patron and Contributor Members lists.

FINANCIAL STATEMENTS

Combined Statement of Financial Position December 31, 2006

Assets

Cash and cash equivalents	\$	1,626,343
Accrued interest receivable		242,249
Receivables		77,296
Museum shop inventory		276,597
Prepaid expenses and other assets		317,879
Contributions receivable:		
Heritage Services		1,161,248
Other		2,192,397
Notes receivable		1,000,000
Funds on deposit under bond resolution		2,886,069
Investments		28,699,234
Property, net		24,181,132
Art collection		44,149,804
Assets held under deferred compensation program		381,260
Total assets	\$	<u>107,191,508</u>

Liabilities and Net Assets

Liabilities:

Accounts payable and accrued liabilities	\$	866,107
Bonds payable		6,250,000
Payable under deferred compensation program		381,260
Total liabilities		<u>7,497,367</u>

Net assets:

Unrestricted:		
Undesignated		74,188,285
Designated by Board		8,099,346
Donor restricted:		
Temporarily		5,989,167
Permanently		11,417,343
Total net assets		<u>99,694,141</u>
Total liabilities and net assets	\$	<u>107,191,508</u>

Combined Statement of Activities
Year ended December 31, 2006

		Unrestricted	Temporarily restricted	Permanently restricted	Total
Revenues:					
Contributions and grants	\$	5,429,441	2,263,883	55,000	7,748,324
Contributions of art		62,980	—	—	62,980
Admissions		136,041	—	—	136,041
Memberships		279,418	—	—	279,418
Bodmer Society		193,642	—	—	193,642
Contemporary Art Society		25,325	—	—	25,325
Education programs		84,896	—	—	84,896
Auxiliary services:					
Food service and facility rental		638,533	—	—	638,533
Museum shop		523,634	—	—	523,634
Association groups		119,260	—	—	119,260
Music series		168,218	—	—	168,218
Interest and investment income		1,308,100	213,554	19,215	1,540,869
Realized gain on investments		483,162	74,201	—	557,363
Unrealized gain on investments		2,074,469	103,143	—	2,177,612
Miscellaneous		151,554	—	—	151,554
Net assets released from restrictions:					
Satisfaction of operating restrictions		1,010,064	(1,010,064)	—	—
Satisfaction of program restrictions		645,852	(645,852)	—	—
Total revenues		13,334,589	998,865	74,215	14,407,669
Expenses:					
Administration		1,671,658	—	—	1,671,658
Curatorial		1,535,244	—	—	1,535,244
Education		1,169,899	—	—	1,169,899
Development		831,914	—	—	831,914
Auxiliary services		972,104	—	—	972,104
Physical plant		1,776,604	—	—	1,776,604
Depreciation		364,234	—	—	364,234
Total expenses		8,321,657	—	—	8,321,657
Change in net assets		5,012,932	998,865	74,215	6,086,012
Net assets, beginning of year		77,274,699	4,990,302	11,343,128	93,608,129
Net assets, end of year	\$	82,287,631	5,989,167	11,417,343	99,694,141

STAFF

as of December 31, 2006

Office of the Director & Joslyn Art Museum Foundation

J. Brooks Joyner
Director
Sandra Reding
President of the Joslyn Art Museum Foundation
Candace Tielebein
Executive Assistant, Office of the Director & Joslyn Art Museum Foundation

External Affairs

Linda Rajcevic
Deputy Director for External Affairs
Jackie Thorstad
Assistant to the Deputy Director for External Affairs
Marketing & Public Relations
Heather Lee Monaster
Marketing Manager
Amy Rummel
Communications Manager
Kathryn Quinn
Visitor & Volunteer Services Coordinator
Patty Schwartzbeck
Receptionist/Secretary
Margaret Lim
Music Series Coordinator*

Events

Deb Bacon
Events Director
JoAnn Evon
Events Coordinator
Randy Figura
Technical Director-Stage/AV
Greg Peteler
Assistant Technical Director-Stage/AV

Hitchcock Museum Shop

Jane Precella
Director of the Museum Shop
Katherine Gazzetta
Museum Shop Merchandising Associate*
Wendy Krecek
Museum Shop Sales Associate/Special Exhibition Merchandising Coordinator*
Kay Armstrong
Jennifer Batko
Cathy Bollinger
Sarah Jensen
Sarah Judd
Maureen Meyer
Sallie Rada

Diann Rausch
Suzanne Riley
Mary C. Stevens
Museum Shop Sales Associates*

Curatorial Affairs

John Wilson, Ph.D.
Director of Curatorial Affairs/Curator of European Art
Ruby C. Hagerbaumer
Coordinator of Curatorial Affairs
Sara Jacobson
Curatorial Assistant
Peter Konin
Librarian
Stephen S. Witte
Editorial Coordinator, Maximilian Journals Project
Marsha V. Gallagher
Director of the Maximilian Journals Project*

Collections & Exhibitions Management

Theodore W. James
Collections & Exhibitions Manager
Penelope Smith
Registrar
Michael Tegland
Preparator
Adam Findley
Assistant Preparator

Education, Academic Affairs, & Public Programs

Anne El-Omami
Director of Education, Academic Affairs, & Public Programs
Nancy Round
Associate Curator of Education-Youth, Family, & Community Programs*
Susie Severson
Assistant Curator of Education-Adult & Special Programs*
Angela Konin
Assistant Curator for Educational and Interpretive Media
Molly Mangimelli-Elliott
Assistant Curator of Education for Studio & Teen Programs
Courtney Wheat
Assistant Curator for Scott EdTech Gallery & Educational Technology

Molly Zimmer
Education Tour & Program Coordinator
Matt Clouse
Outreach Specialist*
Jaci Siemers
Education Assistant/Scott Education Technology Gallery*
Claudia Alvarez
Fairouz Bishara
Michaela Bradley
Denise Brady
Sarah Brogren
Edith Buis
Stephanie Carlson-Pruch
Nancy Childs
Carole DeBuse
Lisa Drum
Cheryl Dyer
Angie Fischer
Ellie Greenspoon
Emily Harrison
Michelle Hayes-Roddy
Leslie Iwai
CaSandra Johnson
Nancy Light Johnson
Robin Kalina
James Kendrick
Linda Klopp
Diane Lounsberry-Williams
Matt Lowe
Anthony Marcuzzo
Linda Meigs
John Miller
Michael Miller
Rachel Mindrup
Troy Muller
Nancy Myer
Bonnie O'Connell
Paul Otero
Nicholas Pella
Kristin Pluhacek
Pascale Roussel
Julie Ryan
Caroline Schmitz
Therese Straseski
Ron Sykes
John Thein
Liz Vercruysse
Yinghua Zhu
Museum Teachers*

Finance & Administration

Miranda Templeman
Controller
Kathleen Cepuran
Accounts Payable Specialist
Sherrl Urbanek
Accounts Receivable Specialist
Chuck Chylinski
Human Resources Manager

Development

Kelly Ppacek
Director of Development
Kathryn Aultz
Assistant Director of Development
Sabrina Weiss
Director of Patron Programs
Rozlyn Merrick
Director of Membership
Judi Stecki
Membership Specialist

Facility Management

Steven Tlsty
Facility Manager
Jay Schwartzbeck
Building Engineer
Scott Orr
Building & Grounds Manager
James Coffin
Leonard Pock
Assistant Custodial Managers
Michael Anderla
David Larsen
Michael McGinness
Josh Schoeller
Building Workers

Information Systems

James Spencer, Jr.
IS Manager
Michael Lechtenberger
IS Support Specialist

Protection

Ronnie Rivers
Protection Administrator
Tyrone Eure
Douglas Gunn
William Lasky
Richard Newmaster
Protection Supervisors
Nicholas Lambrecht
Protection Officer/Visitor Services Specialist
Lisa Nabity
Frances Osugi
Carl Overfield
Kari Skadberg
Protection Officers/Visitor Services Representatives
Michael Andsager
Eric deLaubenfels
Kimberlee Fountain
Linda Stapleton
Merry Stapleton
Protection Officers

*Part-time

 **JOSLYN**
Art Museum
2200 Dodge Street
Omaha, Nebraska 68102-1292

Non-Profit Org.
U.S. Postage
PAID
Permit No. 88
Omaha, Nebraska